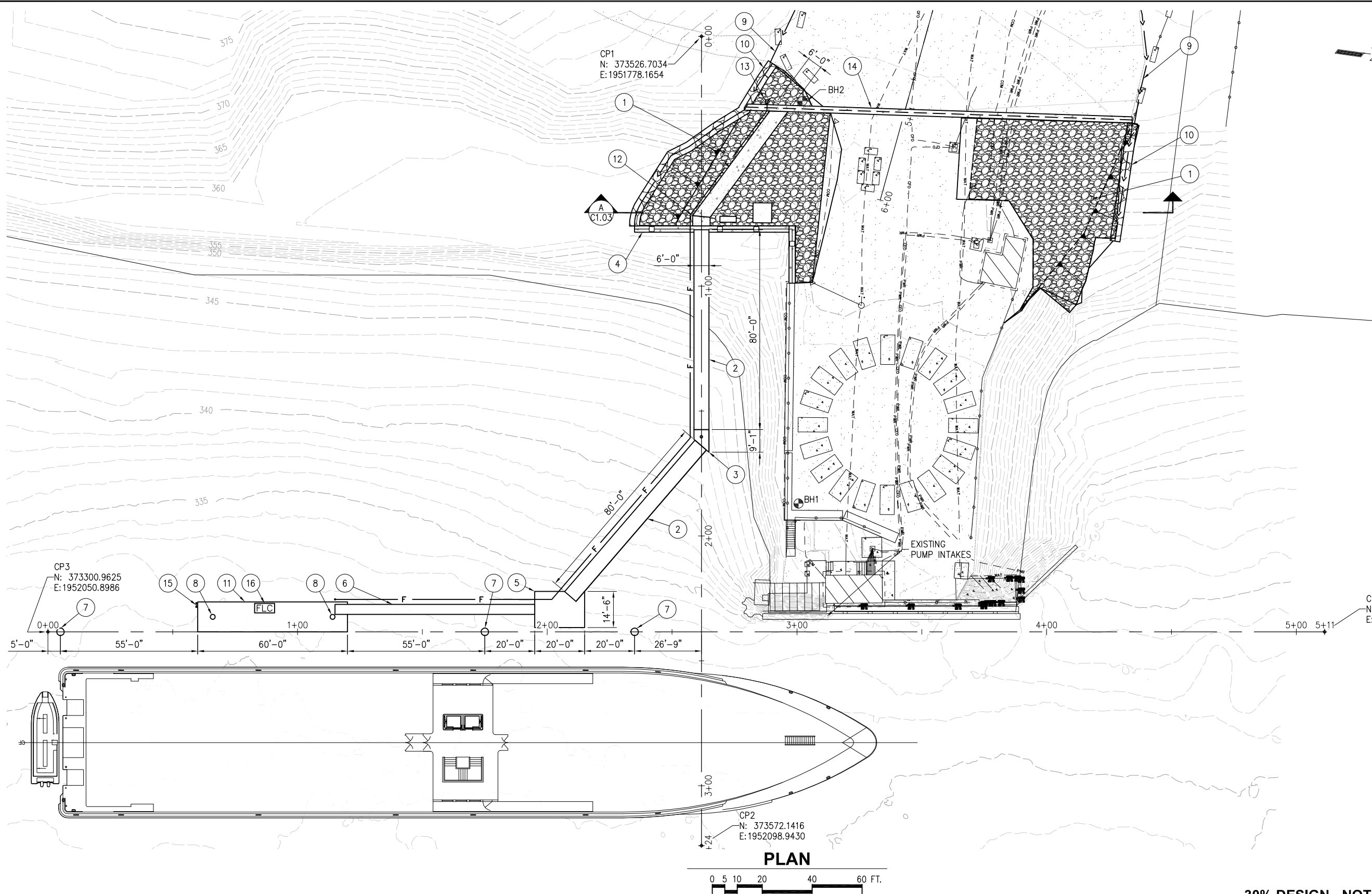


12/19/2025 1:26 PM K:\2025\254020 Port of Benton Barge Complex\30% Submittal\254020-C1.01.dwg



- SHEET NOTES**
- ① GRAVEL LOADING AND UTILITY AREA
 - ② FIXED GANGWAY
 - ③ INTERMEDIATE FIXED PIER
 - ④ ABUTMENT
 - ⑤ FIXED PIER
 - ⑥ 80' GANGWAY
 - ⑦ MONOPILE DOLPHIN
 - ⑧ FLOAT PILE
 - ⑨ DRAINAGE DITCH
 - ⑩ DRAINAGE DITCH OUTLET
 - ⑪ FLOATING DOCK
 - ⑫ CONCRETE SIDEWALK
 - ⑬ DRY FIRE STANDPIPE SYSTEM
 - ⑭ CONCRETE VALLEY DRAIN
 - ⑮ LADDER
 - ⑯ FIRE EXTINGUISHER AND LIFE RING

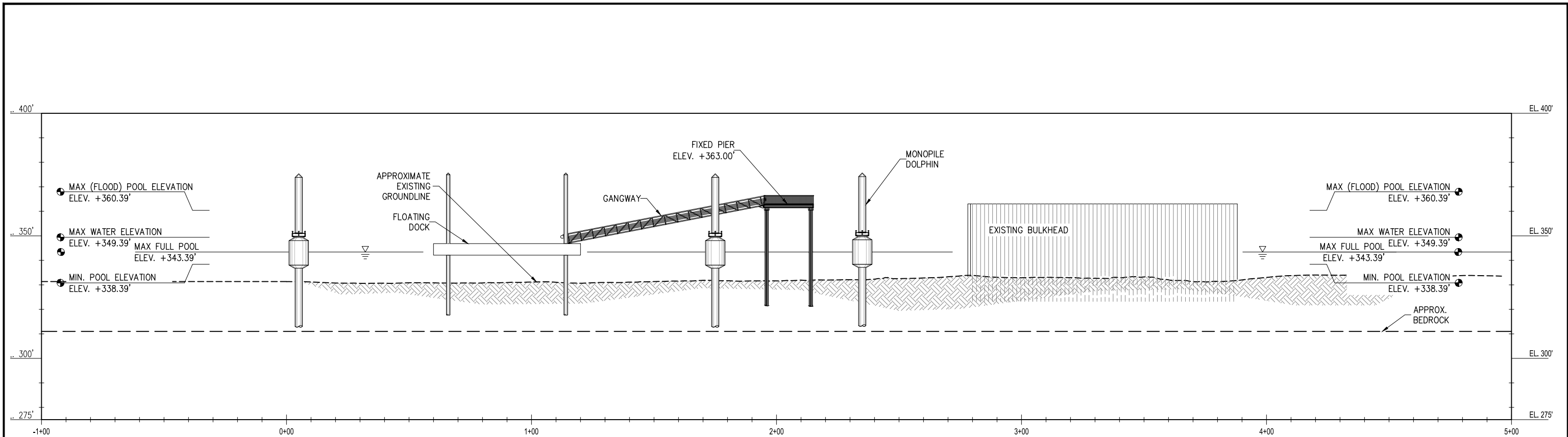
PLAN



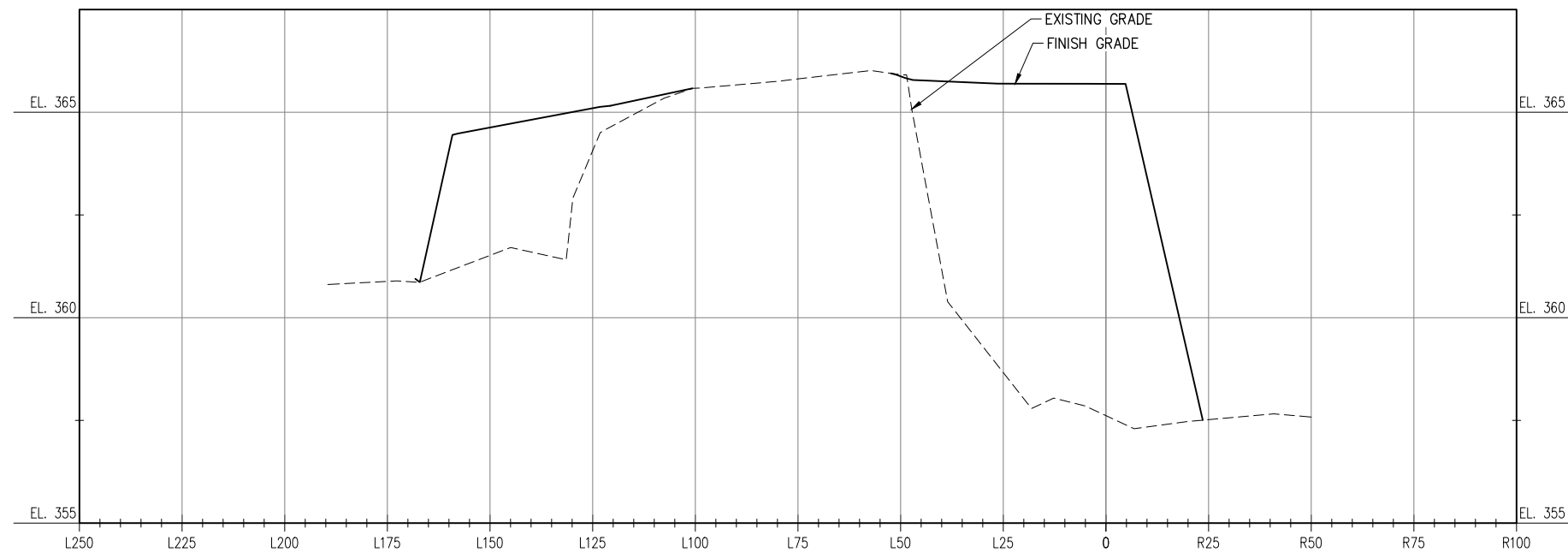
30% DESIGN - NOT FOR CONSTRUCTION

	3240 Eastlake Avenue E. Seattle, Washington 98102 P: 206.624.1387 www.pndengineers.com	PND ENGINEERS, INC. IS NOT RESPONSIBLE FOR SAFETY PROGRAMS, METHODS OR PROCEDURES OF OPERATION, OR THE CONSTRUCTION OF THE DESIGN SHOWN ON THESE DRAWINGS. WHERE SPECIFICATIONS ARE GENERAL OR NOT CALLED OUT, THE SPECIFICATIONS SHALL CONFORM TO STANDARDS OF INDUSTRY. DRAWINGS ARE FOR USE ON THIS PROJECT ONLY AND ARE NOT INTENDED FOR REUSE WITHOUT WRITTEN APPROVAL FROM PND. DRAWINGS ARE ALSO NOT TO BE USED IN ANY MANNER THAT WOULD CONSTITUTE A DETRIMENT DIRECTLY OR INDIRECTLY TO PND.	REVISIONS	PROJECT: PORT OF BENTON BARGE COMPLEX SHORE POWER UPGRADES												
			<table border="1" style="width: 100%; border-collapse: collapse;"> <thead> <tr> <th style="width: 5%;">REV</th> <th style="width: 10%;">DATE</th> <th style="width: 85%;">DESCRIPTION</th> </tr> </thead> <tbody> <tr><td> </td><td> </td><td> </td></tr> <tr><td> </td><td> </td><td> </td></tr> <tr><td> </td><td> </td><td> </td></tr> <tr><td> </td><td> </td><td> </td></tr> </tbody> </table>	REV	DATE	DESCRIPTION										
REV	DATE	DESCRIPTION														
DESIGNED BY: CC PROJECT NO: 254020 SHEET NO:		DRAWN BY: GD DATE: DECEMBER 2025		C1.01												
CHECKED BY:		SCALE: NOTED														

3/23/2026 1:06 PM K:\2025\254020 Port of Benton Barge Complex\90% Submittal\254020-C1.03.dwg



**EAST DOCK FACE ALIGNMENT
ELEVATION**



**GRAVEL LOADING AND
UTILITY AREA SECTION**

A
C1.01

90% DESIGN - NOT FOR CONSTRUCTION

P | N | D
ENGINEERS, INC.
3240 Eastlake Avenue E.
Seattle, Washington 98102
P: 206.624.1387
www.pndengineers.com

PND ENGINEERS, INC. IS NOT RESPONSIBLE FOR SAFETY PROGRAMS, METHODS OR PROCEDURES OF OPERATION, OR THE CONSTRUCTION OF THE DESIGN SHOWN ON THESE DRAWINGS. WHERE SPECIFICATIONS ARE GENERAL OR NOT CALLED OUT, THE SPECIFICATIONS SHALL CONFORM TO STANDARDS OF INDUSTRY. DRAWINGS ARE FOR USE ON THIS PROJECT ONLY AND ARE NOT INTENDED FOR REUSE WITHOUT WRITTEN APPROVAL FROM PND. DRAWINGS ARE ALSO NOT TO BE USED IN ANY MANNER THAT WOULD CONSTITUTE A DETRIMENT DIRECTLY OR INDIRECTLY TO PND.

REVISIONS		
REV	DATE	DESCRIPTION

PROJECT: PORT OF BENTON BARGE COMPLEX SHORE POWER UPGRADES			
TITLE: SECTIONS			
DESIGNED BY:	CC	PROJECT NO: 254020	SHEET NO:
DRAWN BY:	GD	DATE: MARCH 2026	C1.03
CHECKED BY:		SCALE:	NOTED