

An aerial photograph of the Prosser Airport, showing a runway with the number '26' and a taxiway labeled 'TAXIWAY'. The airport is surrounded by fields, some residential areas, and industrial buildings. A semi-transparent blue banner is overlaid on the bottom right of the image.

PROSSER AIRPORT PAVEMENT REHABILITATION & ELECTRICAL REPLACEMENT PROJECT

MARCH 11, 2026

Project Update

- Construction of this project was delayed due to a national shortage of FAA discretionary funding.
- The Port self-funded a crack repair project in May 2025.
- In September 2025, the FAA awarded the Port a discretionary grant to fund construction. The **FAA grant will cover 95% of project costs.**
- The project was competitively bid in August 2025, and the Port awarded a contract to Western United Civil Group to construct the project for \$1,697,280.
- Construction will occur May 4th– June 12th, 2026

Project Scope

- Pavement Rehabilitation
 - Crack repair and slurry seal on asphalt across the Airport
 - Refresh pavement markings across the Airport
- Electrical Replacement
 - Replace Runway 8-26 edge lighting system, guidance signs, PAPIs, REILs, primary windcone, and taxiway edge reflectors.
 - Installation of a supplemental lighted windcone (Runway 8)

Pavement Rehabilitation Project Need

- The existing asphalt has significant cracking (wide and narrow) across the Airport
- Asphalt needs surface sealant to rejuvenate the bituminous surface
- Most recent complete pavement rehab project occurred in 2014

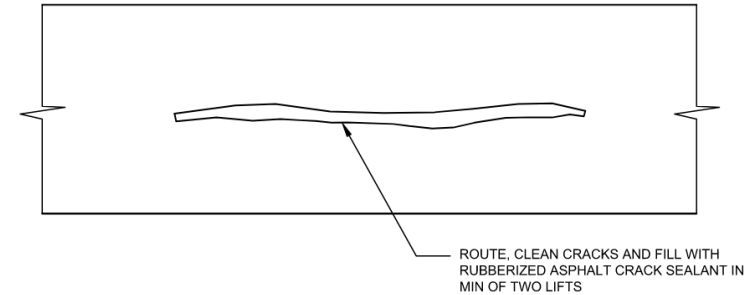


Pavement Rehabilitation Project Approach

- Narrow crack vs wide crack repair
- Application of slurry seal
- Refresh of all pavement markings

A full-time inspector will be on-site during construction to assure compliance with the design.

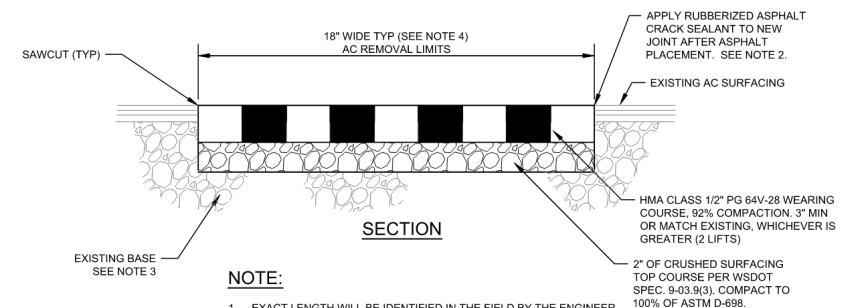
Narrow Crack *Less than 1.5-inch*



NOTES:

1. CLEAR CRACK OF ALL EXISTING SEALER, DEBRIS, AND VEGETATION.
2. VERIFY CRACKS FOR CLEANING AND FILLING WITH THE ENGINEER PRIOR TO BEGINNING WORK
3. FOR PREVIOUSLY SEALED CRACKS OR CRACKS WITH EXCESS VEGETATION, CLEAN CRACKS WITH HEAT LANCE AND FILL WITH RUBBERIZED ASPHALT CRACK SEALANT IN MIN OF TWO LIFTS.

Wide Crack *Greater than 1.5-inch*



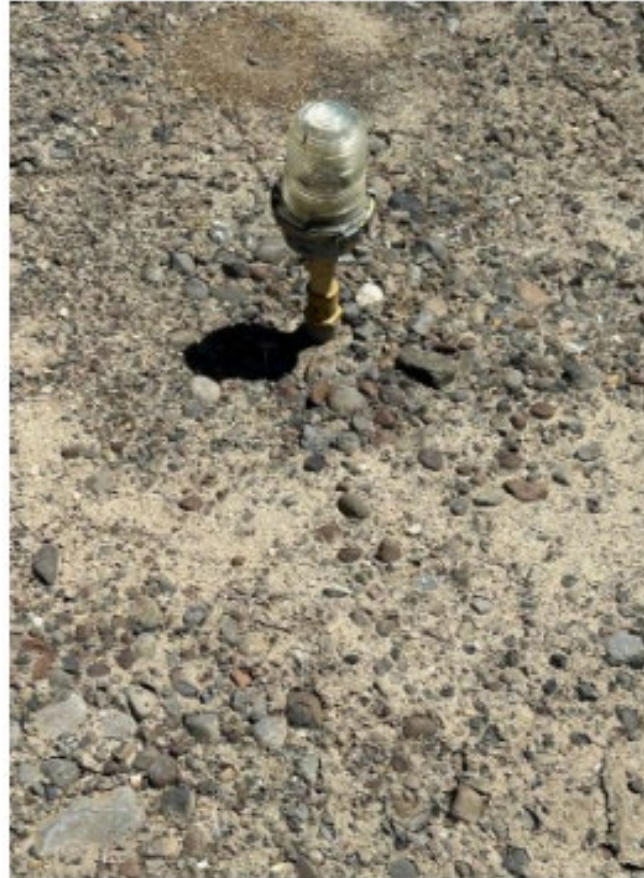
NOTE:

1. EXACT LENGTH WILL BE IDENTIFIED IN THE FIELD BY THE ENGINEER PRIOR TO CONSTRUCTION.
2. TACK ASPHALT FACES OF SAWCUTS WITH PG 64V-28 OIL TACK COAT SHALL BE INCIDENTAL TO OTHER APPLICABLE BID ITEMS; NO SEPARATE MEASUREMENT OR PAYMENT WILL BE MADE.
3. RECOMPACT EXISTING BASE TO 100% OF ASTM D-698 PRIOR TO PLACING NEW CRUSHED SURFACING TOP COURSE.
4. CRACK REPAIR WIDTH MAY BE REDUCED TO 12" IN WIDTH, IF DIRECTED BY THE ENGINEER, FOR UNIFORM CRACKS OF CONSISTENT WIDTH.

Electrical Replacement Project Need

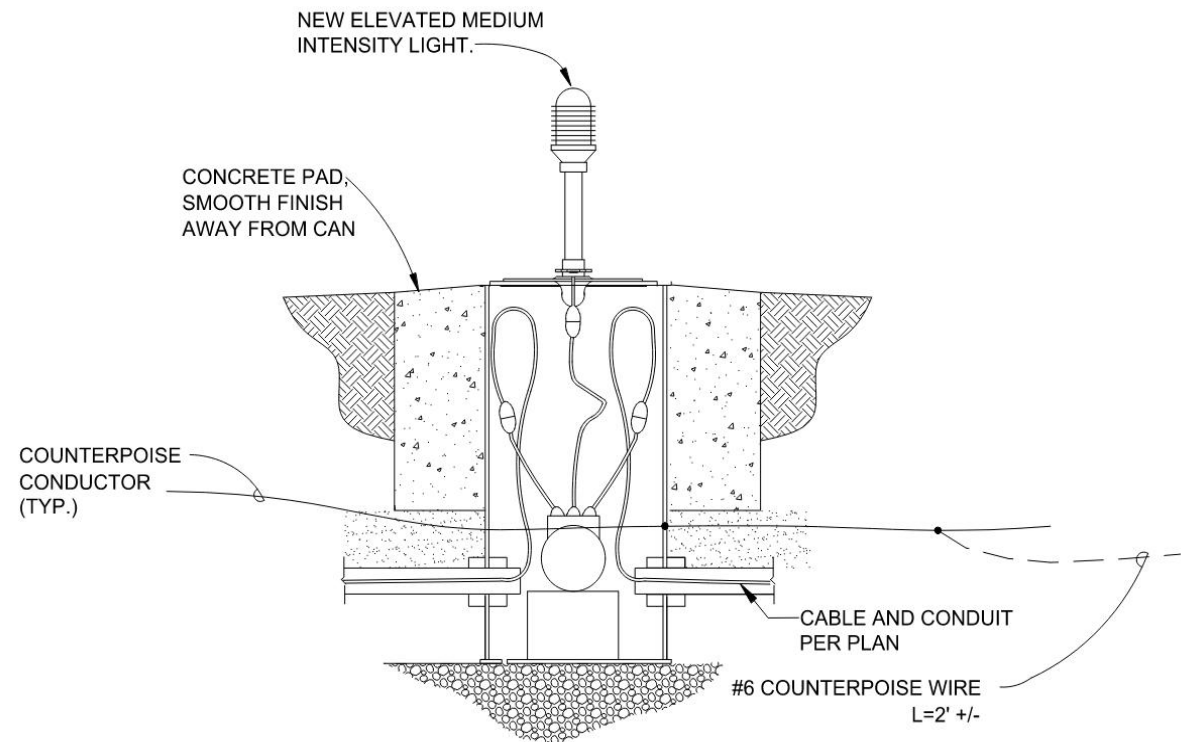
Existing electrical equipment

- More than 20 years old
- Has deteriorated
- Increasingly challenging for the Port to maintain



Electrical Replacement Project Approach

- New LED electrical fixtures (runway edge lights, signs, PAPIs, REILs, and windcones)
- New reflectors on Taxiway A
- Most of the existing electrical cables are direct buried (not in conduit)
- New electrical cable will be placed in new PVC conduit, to be installed via plow to expedite work (and reduce runway closure duration)





FAA Construction Safety & Phasing Requirements

- **Safety is the primary priority** for all FAA-funded construction projects
- FAA-funded projects must follow **FAA construction safety guidelines to meet grant assurances**
- The **FAA approves a construction safety & phasing plan** prior to construction
- The construction safety & phasing plans establishes **closure limits, work areas, and safety procedures** and becomes part of the construction contract manual

Project Construction Phasing & Schedule

- Runway 8-26, taxiways, taxilanes, and apron areas will experience **temporary closures during construction** to meet FAA safety requirements
- Construction has been phased to **reduce impacts to Airport users as much as possible**
- Work will occur over **40 calendar days (May 4, 2026 – June 12, 2026)**
- Runway 8-26 will be closed for up to 26 calendar days
- Runway will **be open for Memorial Day weekend:**
 - 4 PM Friday (May 22) - 6 AM Tuesday (May 26)





Thank You for your Interest & Involvement



First name

Amelia

Last name

Earhart

Email

ae@google.com

- Advanced Manufacturing
- Airbusiness
- Airport eNews**
- Clean Energy
- Entrepreneurship and Innovation
- Port eNews
- Technology
- Tri-Cities Research District
- VERTical

