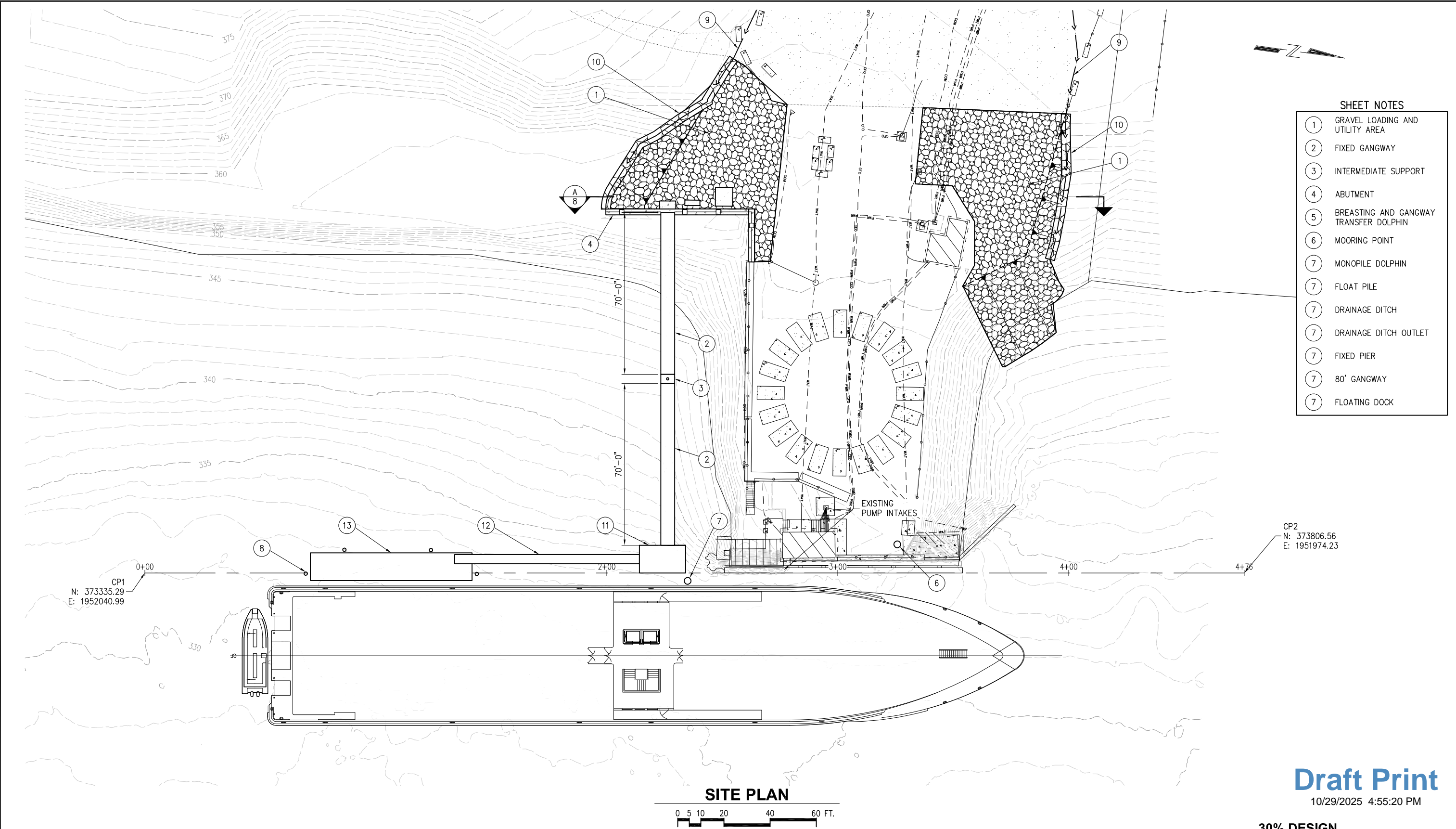


10/29/2025 2:18 PM C:\Users\gdeon\Desktop\30% Submittal\254020-07.dwg



- SHEET NOTES**
- 1 GRAVEL LOADING AND UTILITY AREA
 - 2 FIXED GANGWAY
 - 3 INTERMEDIATE SUPPORT
 - 4 ABUTMENT
 - 5 BREASTING AND GANGWAY TRANSFER DOLPHIN
 - 6 MOORING POINT
 - 7 MONOPILE DOLPHIN
 - 7 FLOAT PILE
 - 7 DRAINAGE DITCH
 - 7 DRAINAGE DITCH OUTLET
 - 7 FIXED PIER
 - 7 80' GANGWAY
 - 7 FLOATING DOCK

Draft Print
10/29/2025 4:55:20 PM

30% DESIGN

<div><div><div><div>P</div><div>N</div><div>D</div></div><div>ENGINEERS, INC.</div></div><div>3240 Eastlake Avenue E Seattle, Washington 98102 P: 206.624.1387 www.pndengineers.com</div></div>	<p>PND ENGINEERS, INC. IS NOT RESPONSIBLE FOR SAFETY PROGRAMS, METHODS OR PROCEDURES OF OPERATION, OR THE CONSTRUCTION OF THE DESIGN SHOWN ON THESE DRAWINGS. WHERE SPECIFICATIONS ARE GENERAL OR NOT CALLED OUT, THE SPECIFICATIONS SHALL CONFORM TO STANDARDS OF INDUSTRY. DRAWINGS ARE FOR USE ON THIS PROJECT ONLY AND ARE NOT INTENDED FOR REUSE WITHOUT WRITTEN APPROVAL FROM PND. DRAWINGS ARE ALSO NOT TO BE USED IN ANY MANNER THAT WOULD CONSTITUTE A DETRIMENT DIRECTLY OR INDIRECTLY TO PND.</p>	REVISIONS			PROJECT: PORT OF BENTON		
					BARGE COMPLEX SHORE POWER UPGRADE		
					TITLE: HIGH DOCK SITE PLAN		
					DESIGNED BY: CC PROJECT NO: 254020 SHEET NO:		
					DRAWN BY: GD DATE: OCTOBER 2025		
					CHECKED BY: SCALE: NOTED		
		REV	DATE	DESCRIPTION			

7 OF 16