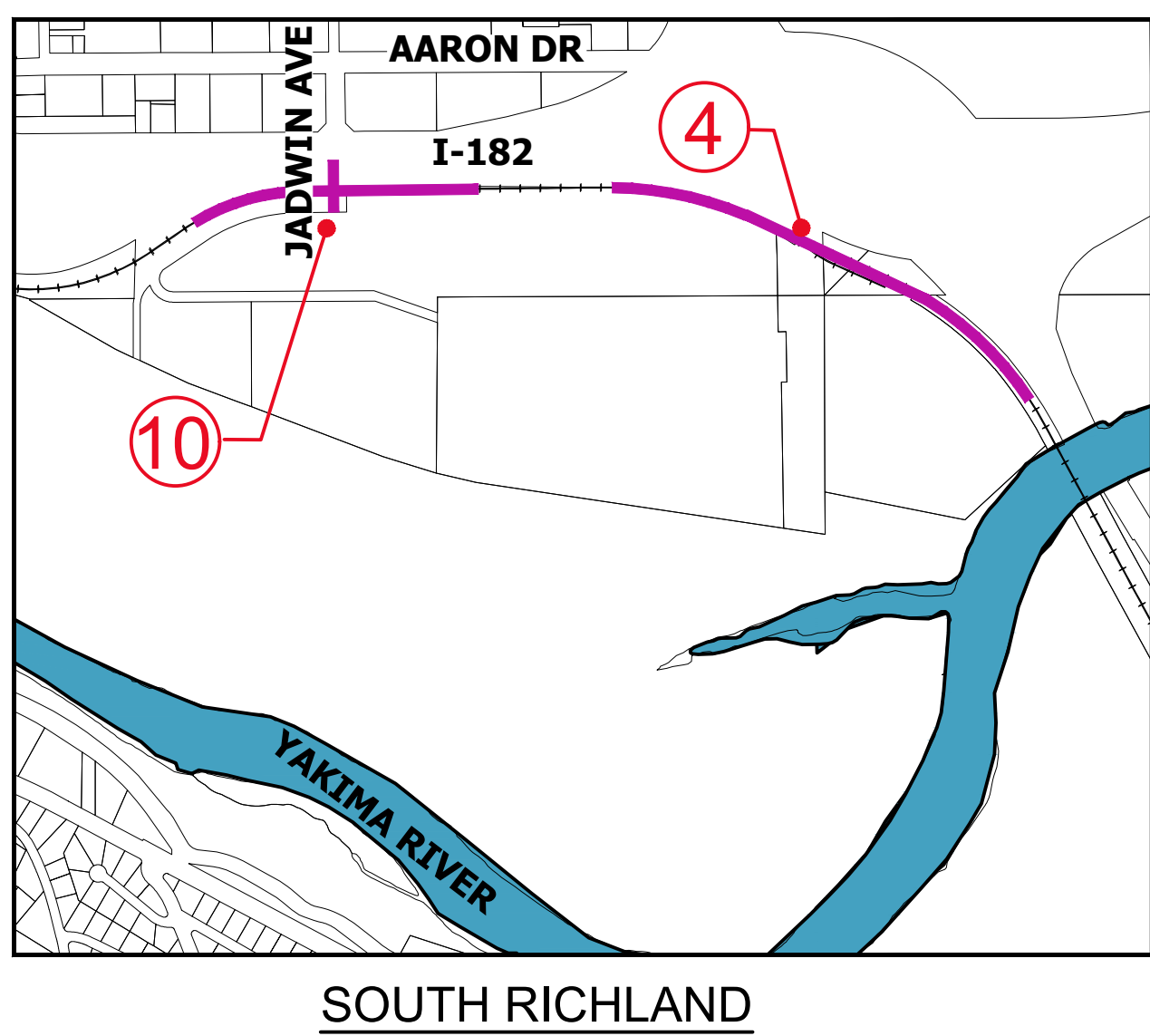
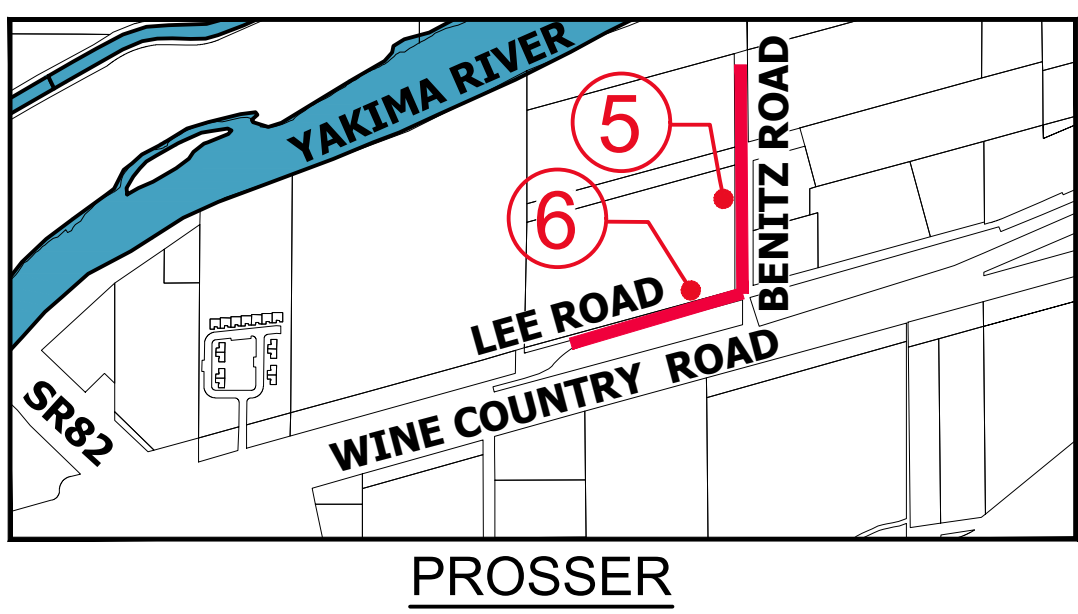
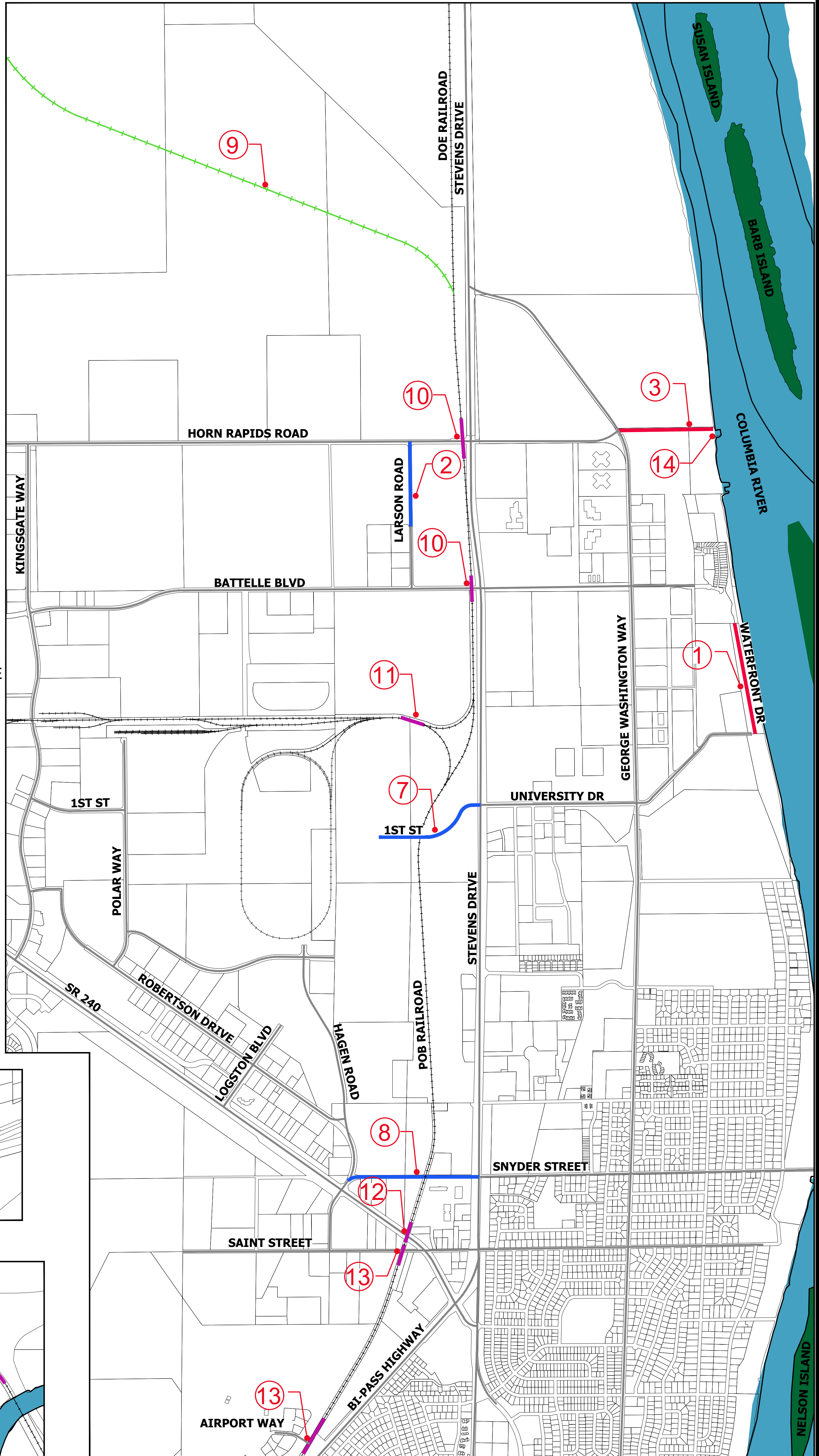


SIX YEAR TRANSPORTATION IMPROVEMENT PROGRAM 2025-2030

PROJECT LISTING

- ① IMPROVEMENTS TO WATERFRONT DRIVE NORTH OF UNIVERSITY DRIVE
- ② LARSON ROAD - BATTELLE BOULEVARD TO HORN RAPIDS ROAD
- ③ HORN RAPIDS ROAD EXTENSION (FROM EAST END OF HORN RAPIDS TO BARGE FACILITY) AND IMPROVEMENTS TO BARGE FACILITY
- ④ SOUTH RICHLAND RAIL TRANSLOAD FACILITY (ADJACENT TO SR 240 - INLAND ASPHALT)
- ⑤ BENITZ ROAD - RECONSTRUCTION FROM WINE COUNTRY ROAD TO NORTH END
- ⑥ LEE ROAD - RECONSTRUCTION FROM BENITZ ROAD WEST TO POB BOUNDARY
- ⑦ 1ST STREET WEST - STEVENS DRIVE WEST 1,500 FEET TO RAILROAD TRACKS
- ⑧ SNYDER STREET - STEVENS DRIVE TO ROBERTSON ROAD, INCLUDING RAIL CROSSING
- ⑨ EXTEND RAILROAD INTO THE 1,341 ACRE INDUSTRIAL PARK
- ⑩ RAIL CROSSING MAINTENANCE IMPROVEMENTS -REPLACE CROSSINGS AT JADWIN AVE, STEPTOE STREET, BATTELLE BOULEVARD & HORN RAPIDS ROAD
- ⑪ WHITE BLUFFS RAIL - RAIL AND TIE REPLACEMENT - REPLACE TRACK IN WYE AND IN 3 MILES OF ELEVATED CURVES AND ON APPROXIMATELY 5 MILES OF TANGENT TRACK
- ⑫ WHITE BLUFF RAIL - SR 240 RAILROAD SIGNAL REPLACEMENT PROJECT, REPLACE CONCRETE CROSSING, TIES, RAIL AND RAILROAD SIGNAL
- ⑬ WHITE BLUFFS RAIL - RAIL CROSSING REPLACEMENTS, AIRPORT WAY, SAINT STREET AND KINGSGATE WAY
- ⑭ BARGE FACILITY IMPROVEMENTS



LEGEND

- NEW CONSTRUCTION
- RECONSTRUCTION PROJECT
- MISCELLANEOUS CONSTRUCTION
- RAIL IMPROVEMENT CONSTRUCTION