

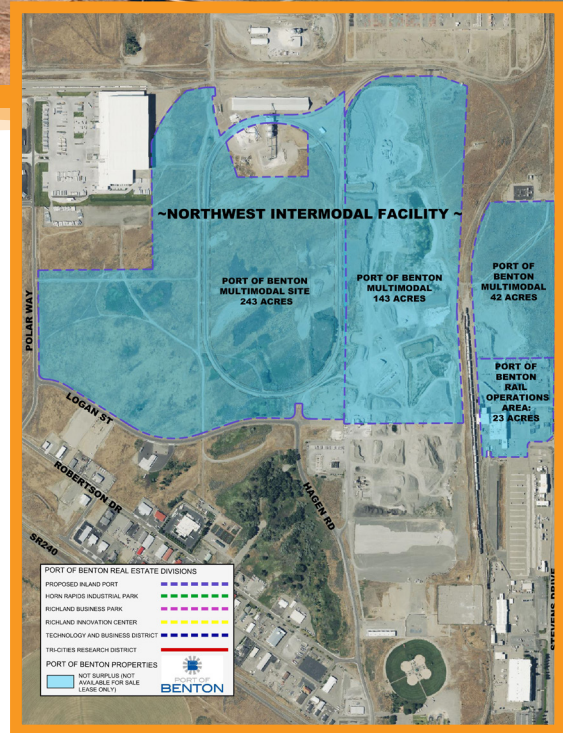


Rail Intermodal Facility

Supporting the Growth of Local Industries

Planned Project

- Create an intermodal facility by constructing additional track, commodity storage buildings and handling equipment, and leveraging the Port's locomotive repair facility



Intermodal Transportation Benefits

- Serves as a critical link in the supply chain to support our local shippers in getting their goods to market
- Moves containers and truck trailers on and off trains – one freight train can haul a load that would otherwise require over 300 trucks
- Lowers costs and carbon emissions, as companies can use trucks for local service and rail for long haul
- Maximizes efficiency as rail shipments to seaports are received 24/7
- Drives additional private-sector investment, creating jobs

Project Funding & Anticipated Timeline

Central Washington Corn Processors Invested \$6 Million to Initiate the Project

Port Is Applying for Federal and State Grants

Infrastructure Planning Underway
Construction Anticipated to Begin in 2025 - 2026



PortofBenton.com/Projects