



PORT OF BENTON

Benton City

Paterson

Prosser

Richland



PORT OF
BENTON



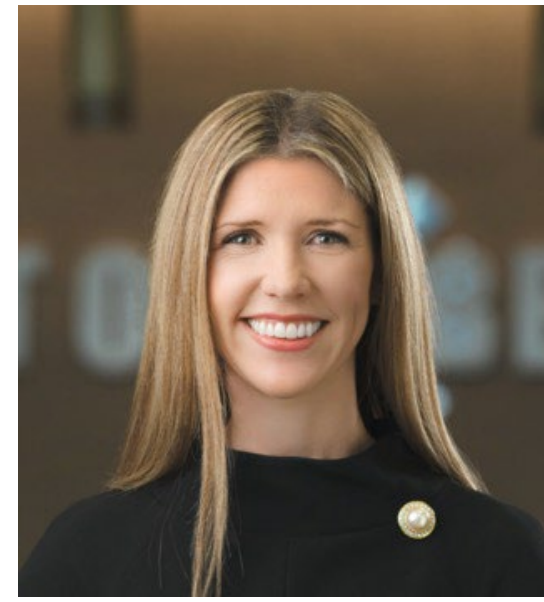
Commissioners



Scott D. Keller
Commission President
District 2



Roy D. Keck
Commission Vice President
District 1



Lori Stevens
Commission Secretary
District 3



Sites & Facilities

Benton City

- Benton City Development Building

Paterson

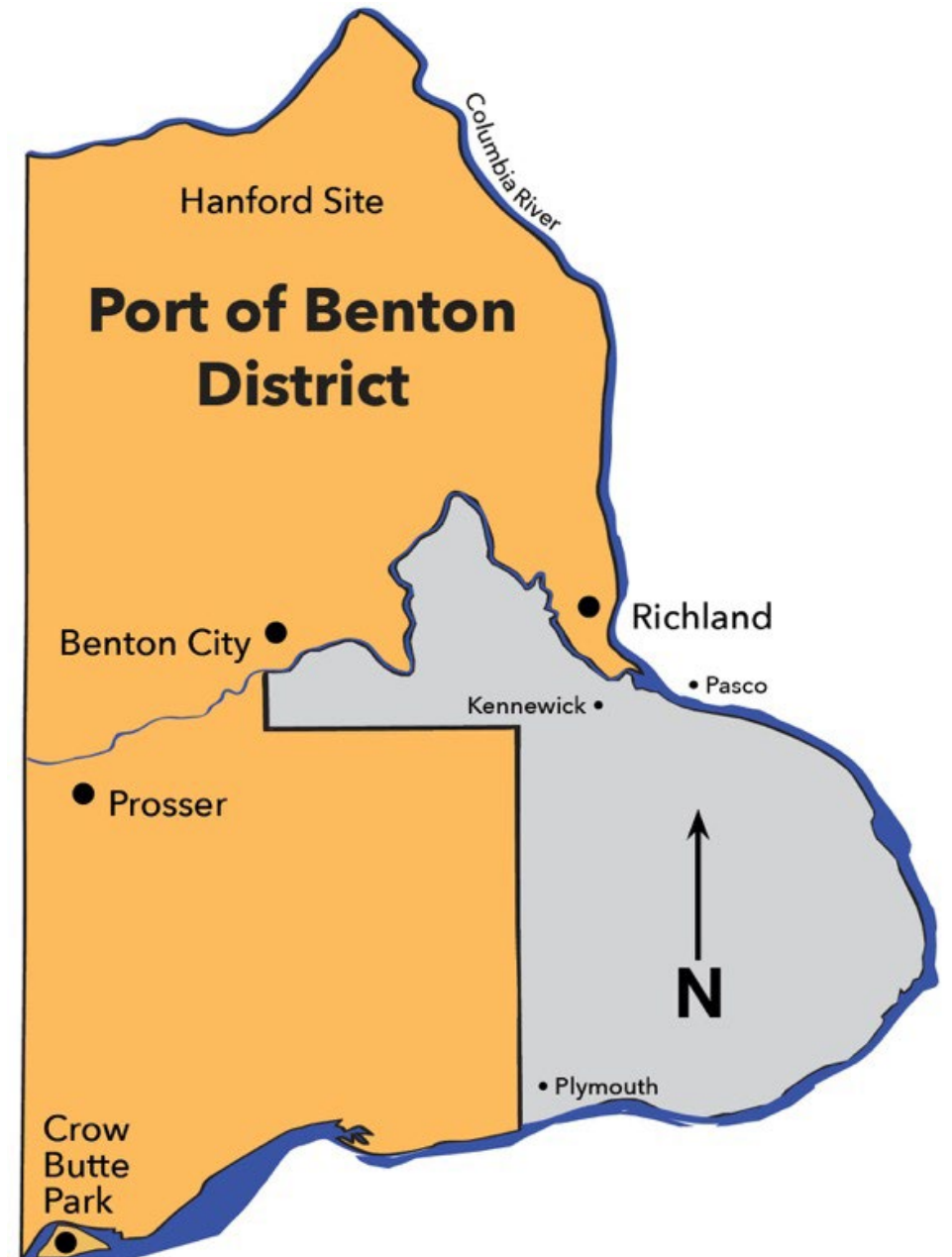
- Crow Butte Park

Prosser

- Prosser Wine & Food Park
- Vintners Village
- Prosser Airport
- Walter Clore Wine & Culinary Center

Richland

- Technology & Business Campus
 - USS Triton Sail Park
- Richland Innovation Center
- Richland Business Park
- Richland Airport
- North Horn Rapids Industrial Park





Total Assets



↑ **3,200**

Direct Jobs
Among Port Tenants



~**\$90 Million**

Total Assets



2,756 Acre

Port District



2

Airports



16-Mile

Short-Line Rail



250 Acres

of Waterfront



50

Buildings



1

Barge Slip



1

High Dock



ECONOMIC DEVELOPMENT

Benton City



Benton City



Benton City



Please join us!
**Pepper Preppers Kitchen
Ribbon Cutting Celebration**

**Saturday May 6, 2023
10 a.m. - 2 p.m.
Ribbon Cutting at 11 a.m.
713 9th St., Benton City**

Free Samples
 Food Truck

Vendors
 Tours

**PORT OF
BENTON**

Benton City



TOURISM AND RECREATION

Crow Butte Park

CrowButte.com



Paterson



TRANSPORTATION

Prosser Airport & Business Park



Prosser



ECONOMIC DEVELOPMENT

Walter Clore Center

WASHINGTON STATE
UNIVERSITY
TRI-CITIES

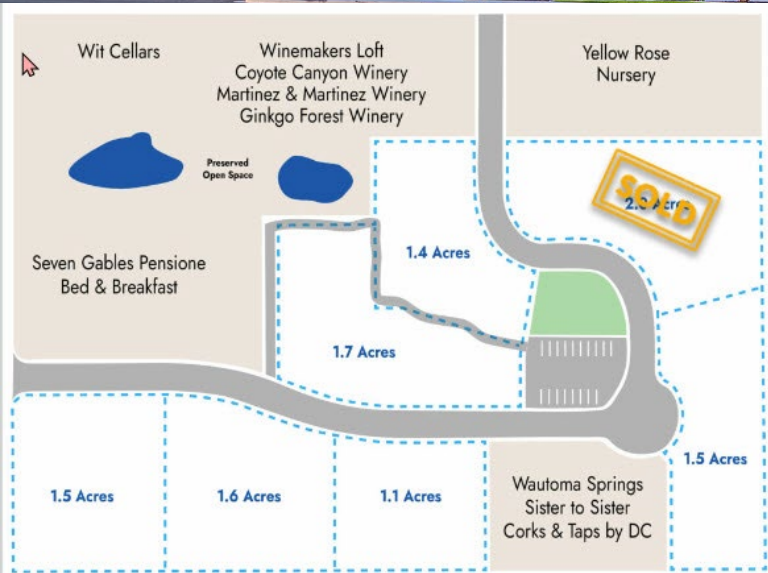


Prosser



TOURISM AND RECREATION

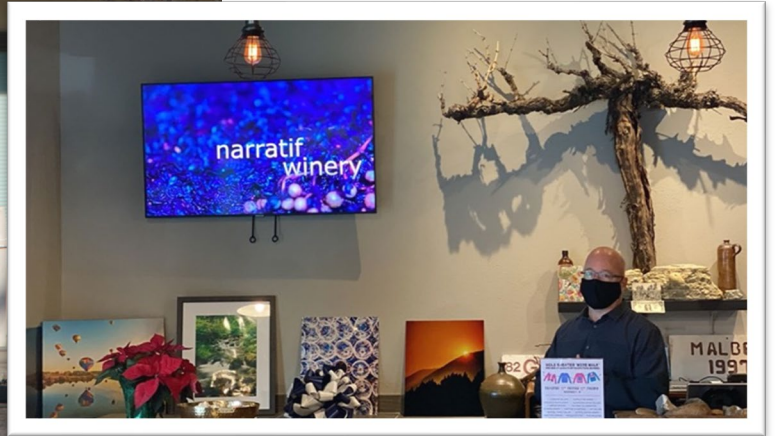
Vintners Village



Prosser



Wine & Food Park



Prosser



Tourism





Upcoming Projects

Port Construction Projects

Prosser & Richland Airports Upgrades Planned



The Port is currently in the design phase for several Federal Aviation Administration Airport Improvement Program grant projects at its Prosser and Richland Airports.

The projects will include pavement maintenance at both airports, a taxi lane extension on the south end of the Richland Airport near the helipads and a complete lighting replacement project in Prosser. Construction is expected to take place in 2024 and 2025.

Rail Crossings Upgrades & Track Maintenance Planned



In 2024, the Port will replace rail crossings and perform additional track maintenance at the following intersections:

- State Route 240 – replace the railroad crossing and replace the railroad crossing flashing lights and gates (the Port will continue performing asphalt and concrete maintenance on this crossing until replacing it next year to sustain safe operations for train and vehicle traffic)
- Airport Way – replace the rail crossing with concrete panels and install lighted crossbucks
- Saint Street – replace the rail crossing with concrete panels and install lighted crossbucks

Each intersection will be fully closed for multiple days during construction. Detour routes will be in place and communicated well in advance.

The Port will complete the projects in the summer of 2024 and will communicate the specific project dates once they are determined. Work windows will be limited to noon on a Thursday to 6 a.m. on the following Monday to minimize disruptions to vehicle traffic.

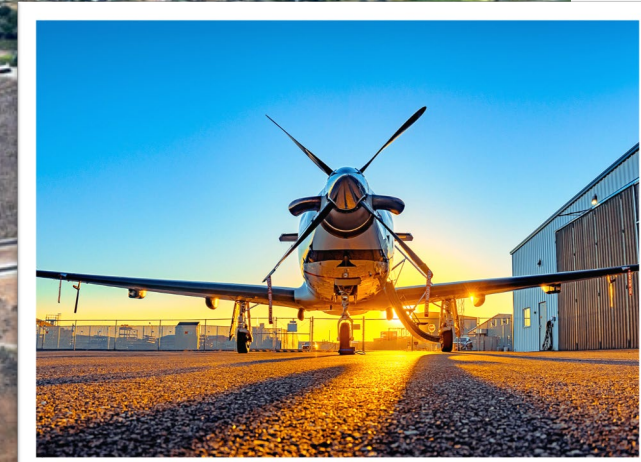
The projects will be funded by \$3.1 million in state and federal grants, a \$250,000 low-interest Freight Rail Assistance Program loan and \$385,000 in Port matching funds.





TRANSPORTATION

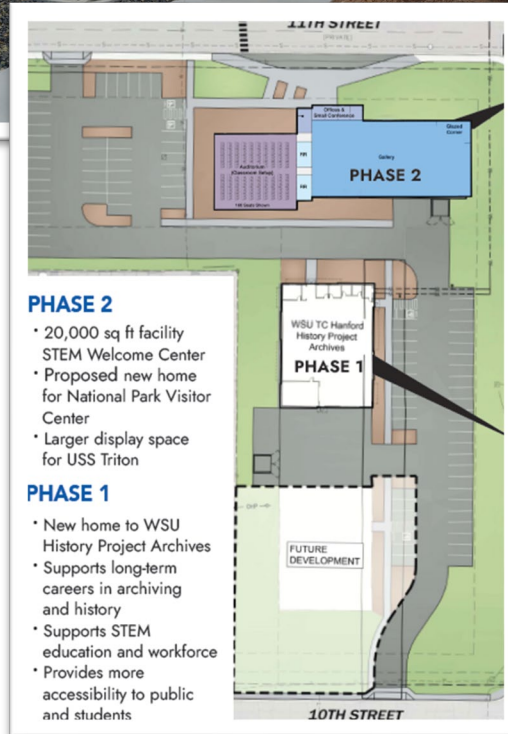
Richland Airport & Business Park



Richland

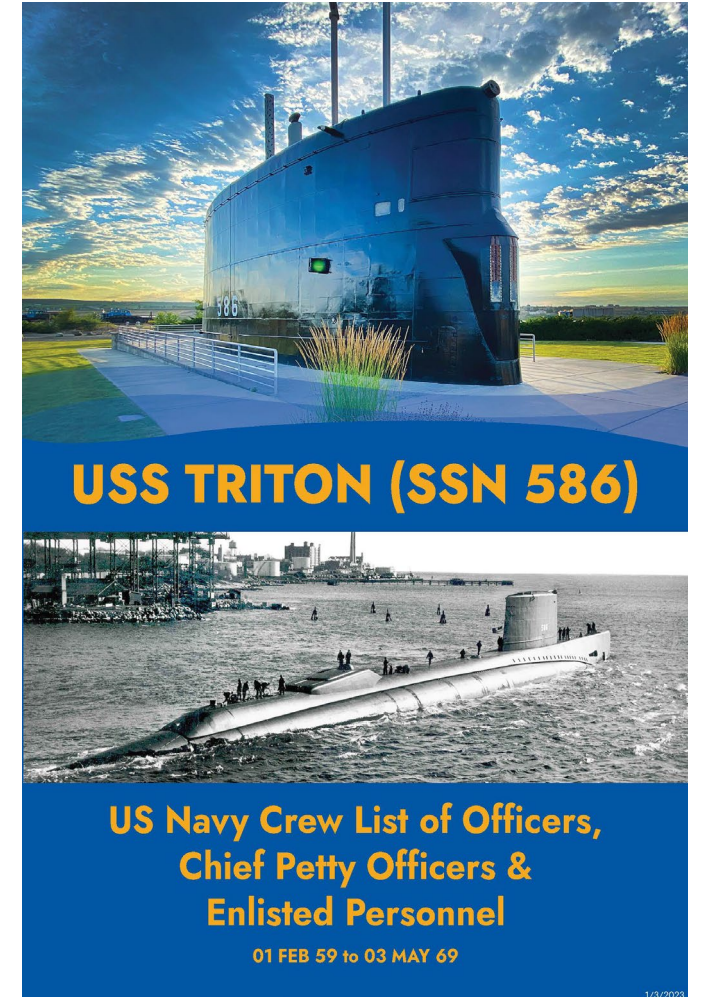


Upcoming Projects





USS Triton Sail Park



Richland



Waterfront Planning



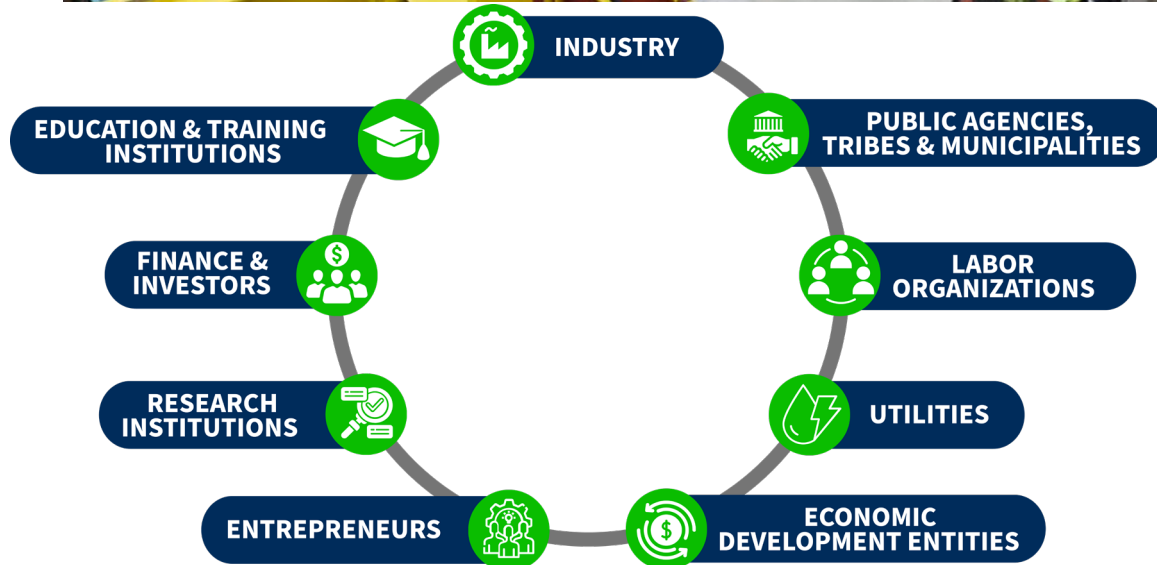


ECONOMIC DEVELOPMENT

Clean Up to Clean Energy



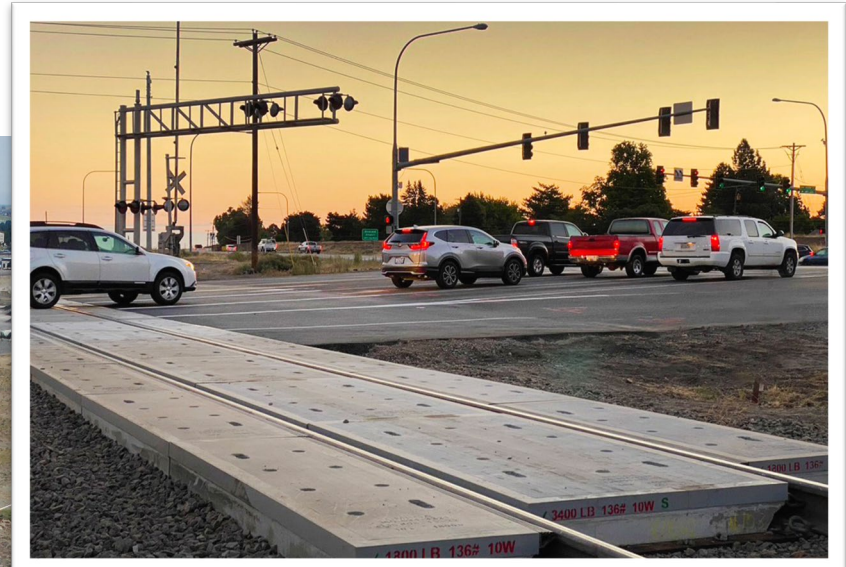
Accelerating The Transition To Advanced Clean Energy Technologies





Rail Activities

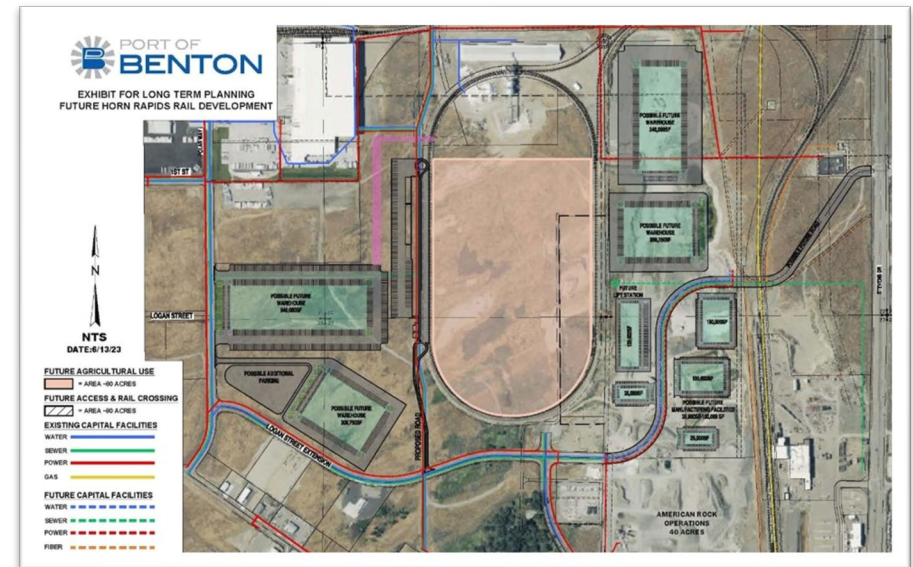
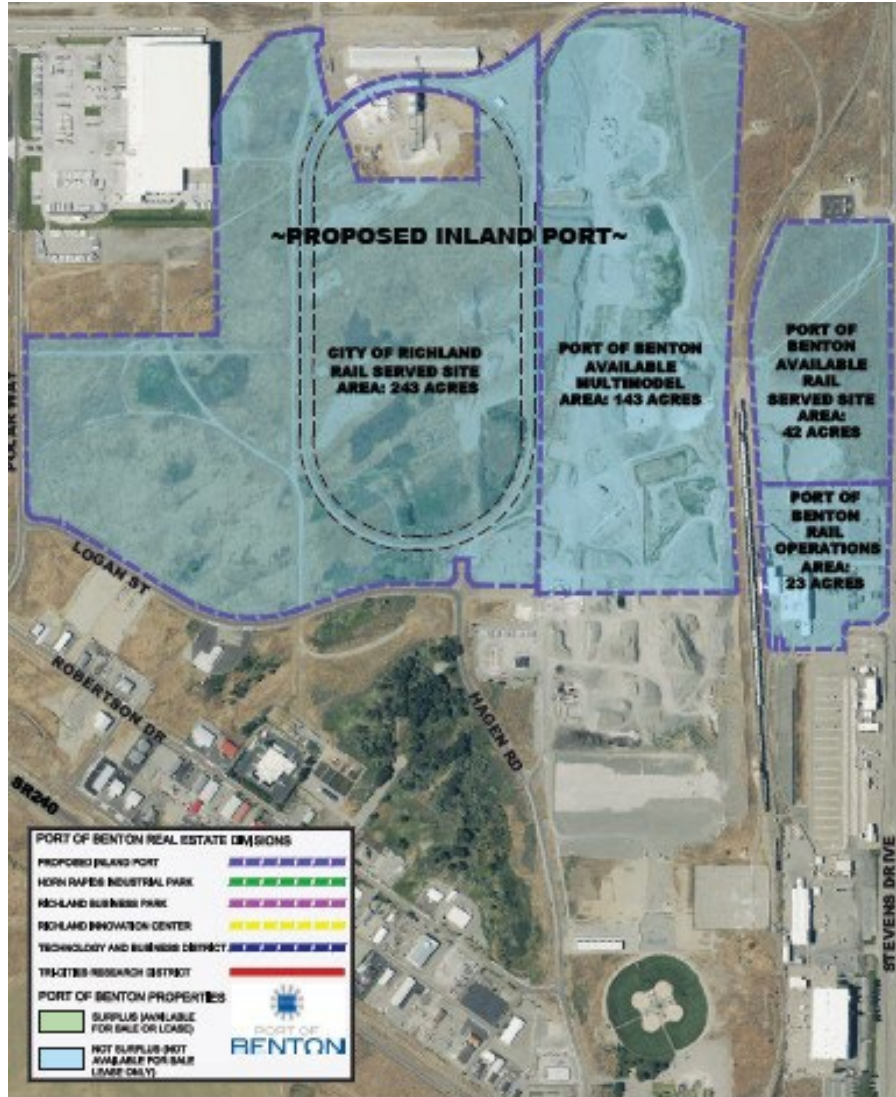
TRANSPORTATION



Richland



Inland Port





North Richland



**ATLAS
AGRO**



TUCCI ENERGY SERVICES



Thank You!



PortofBenton.com | 509-375-3060