

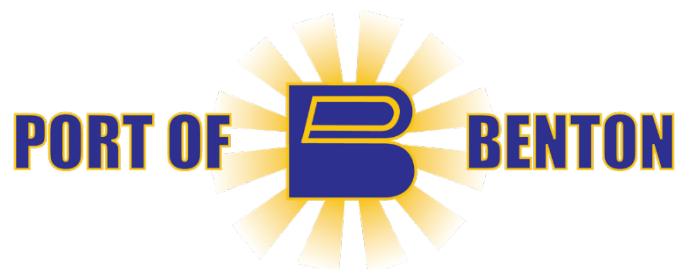
# PORT OF BENTON

## 2024 STORMWATER MANAGEMENT PLAN PROGRAM UPDATE

Eastern Washington Phase II Municipal Stormwater Permit No. WAR04-6203



3250 Port of Benton Blvd.  
Richland, WA 99354



## **Table of Contents**

- A. Introduction
- B. Public Education and Outreach
- C. Public Involvement and Participation
- D. Illicit Discharge Detection and Elimination
- E. Construction Site Stormwater Runoff Control
- F. Post-Construction Stormwater Management for New Development and Redevelopment
- G. Municipal Operations and Maintenance
- H. Compliance with Total Maximum Daily Load Requirements
- I. Monitoring and Assessment
- J. Reporting and Record Keeping

## **Appendices**

- 1. Stormwater Management Plan Inter-Departmental Coordination Procedures
- 2. Utility Billing Stormwater Insert
- 3. 2023 Illicit Discharge Investigations
- 4. Port of Benton Interlocal Agreement
- 5. 2023 Franklin Conservation District Education Reports

## A. Introduction

This Stormwater Management Program is a living document, updated annually and applicable to the City of Richland (City) and Port of Benton (Port). The 2024 edition is built on the foundation of previous program documents and has been revised to reflect new activities and program requirements. The program is required by the Washington State Department of Ecology's National Pollutant Discharge Elimination System Phase II Permit for Eastern Washington (Permit). In 2007 the Port of Benton and the City of Richland entered into an Interlocal agreement to become Co-Permittees, in accordance with section S6.A.4 of the Permit. As long as the City and Port continue to have this written agreement in place, the City assumes the permit compliance activities of the Port

The Permit is comprised of six elements and the implementation and enforcement of the six elements is collectively referred to as a Permittee's Stormwater Management Program (SWMP). The six elements are:

1. Public Education and Outreach
2. Public Involvement and Participation
3. Illicit Discharge Detection and Elimination
4. Construction Site Stormwater Runoff Control
5. Post-Construction Stormwater Management for New Development and Redevelopment
6. Municipal Operations and Maintenance

In addition to these six minimum elements, Ecology requires three additional elements:

1. Compliance with Total Maximum Daily Load Requirements
2. Monitoring and Program Evaluation
3. Reporting and Recordkeeping

The SWMP is designed to reduce the discharge of pollutants from the City and Port Municipal Separate Storm Sewer System (MS4) to the maximum extent practicable to satisfy the state requirement to apply "All Known, Available, and Reasonable Methods of Prevention, Control and Treatment" (AKART) prior to discharge. The Permit requires that specified activities from Permit elements be completed each year in order to achieve full compliance by the end of each Permit term.

Within this SWMP document, a description of the jointly executed permit compliance activities can be found. This includes information about the activities that took place during the previous year along with schedules for activities in the upcoming year. In 2024 the Port's SWMP will continue to be implemented in accordance with S5 of the 2019-2024 Permit, and the Interlocal agreement with the City. Joint planning and implementation of compliance strategies for the new 2019-2024 Permit began when the new permit was issued in July 2019, in order to meet all requirements therein.

## **B. Public Education and Outreach**

### **Permit Requirement Summary (S5.B.1)**

Implement a public education and outreach program for the general public, including home owners, teachers, school-age children, or overburdened communities that addresses:

- The importance of improving water quality and protecting beneficial uses of waters of the state. The potential impacts from stormwater discharges. Methods for avoiding, minimizing, reducing and/or eliminating the adverse impacts of stormwater discharges.
- Provide information to businesses and the general public about: preventing illicit discharges, including what constitutes illicit discharges, the impacts of illicit discharges, and promoting the proper management and disposal of waste. Management of dumpsters and wash water. The use and storage of automotive chemicals, hazardous cleaning supplies, carwash soaps, and other hazardous materials.
- Provide information to engineers, construction contractors, developers, development review staff, and land use planners about: technical standards, the development of stormwater site plans and erosion control plans. Low impact development (LID) and stormwater best management practices (BMPs) for reducing adverse impacts from stormwater runoff from development sites. Municipal stormwater requirements.

In an effort to promote discussion and awareness about stormwater amongst the target audiences, the City and Port continue to provide education and outreach activities throughout the year. Descriptions of the outreach activities that took place during 2023 and a schedule of the planned activities for 2024 are below.

#### **HBA Home and Garden Show & Riverfest**

The City helped sponsor and staff booths at the Regional Home and Garden Show and Riverfest. These booths are a joint effort between West Richland, Kennewick, Pasco, and the Franklin Conservation District. Booth visitors answer stormwater related questions to receive stormwater themed prizes. Educational brochures and handouts are also given.

#### **Drain Rangers and Wheat Weeks**

The City of Richland entered into an agreement with Pasco, Kennewick, West Richland and the Franklin County Conservation district in 2010 to provide educational programs to local school children in the Tri-Cities area. These programs have continued on an annual basis. The Drain Rangers and Wheat Weeks programs are focused on educating children about the environment. Topics include the water cycle, watersheds, and stormwater runoff, including the impacts that it can have on the environment. 2023 data on total number of students and teachers involved in these programs is located in appendix 5.



### **Benton Conservation District Salmon Summit**

In 2023, the City was able to have a booth at the Salmon Summit. This annual event is focused on student education and features multiple educational booths in Columbia Park. The kids rotate from booth to booth throughout the day, learning about a variety of topics. The City's booth includes a stormwater and wastewater educational talk for the students. Afterwards the students complete a corn hole toss game and each are a fish/water themed prize that includes the City's illicit discharge hotline.

### **City Fair and National Night Out**

In 2023, the City of Richland held their annual City Fair event which provides outreach and exhibitions of the multiple departments that make up the City's operations. A booth promoting awareness of the Stormwater and Wastewater departments was held at this event.

### **Developer, Contractor, and Engineer Outreach**

Information for developers, contractors, engineers and other consultants involved with land development is always available on the City and Port websites and physical offices. An informational handout provided to the development community through the development departments covers the construction and post-construction stormwater requirements. Along with explaining the requirements that must be met, this document provides examples and information about where to find further guidance.

### **Schedule of Public Education and Outreach Activities for 2021**

| <b>Date</b>   | <b>Activity</b>                        |
|---------------|--|
| Ongoing       | Drain Rangers and Wheat Weeks Programs |
| February 2024 | HBA Regional Home and Garden Show      |
| April 2024    | Salmon Summit                          |
| August 2024   | City Fair and National Night Out       |
| October 2024  | Riverfest                              |
| October 2024  | Stormwater Utility Billing Insert      |

In 2023, the existing program for Public Education and Outreach will continue in accordance with S5. B.1 of the 2019-2024 Permit. Planning and implementation of compliance strategies for the new 2019-2024 Permit began when the new permit was issued in July 2019, to meet all requirements therein.

## C. Public Involvement and Participation

### Permit Requirements Summary (S5.B.2)

- Provide ongoing opportunities for public involvement and participation such as advisory panels, public hearings, watershed committees, participation in developing rate-structures, or other similar activities.
- Implement a program or policy directive to create opportunities for the public to provide input during the decision-making processes involving the development, implementation and update of the SWMP.
- Post the updated SWMP and annual report on the City's website by May 31.

The Port of Benton and City of Richland are always open to comments from the public. The stormwater utility webpage on the City's website has contact information for both the Stormwater Manager and the Stormwater Maintenance Supervisor.

### **Public Comment Period for SWMP Update**

To garner comments on the 2024 SWMP Update, the Port of Benton uploaded it to its website for a period of review. No significant comments were received.

### **Program Elements For 2024**

In 2024, the City and Port will continue to provide opportunities for citizens to provide feedback on stormwater issues. In April a draft version of the SWMP Plan Update will be posted on the City and Port website and a notification requesting public comments will be publicized. An open house may also be held to provide a chance for the public to ask questions and provide input to City staff about the SWMP Plan Update. After collecting and discussing the Public's comments and suggestions, City and Port staff will make any necessary changes to the SWMP Plan and by May 31 will post the final version on the City and Port websites.

In 2024, the existing program for Public Involvement and Participation will continue in accordance with S5.B.2 of the 2019-2024 Permit. Planning and implementation of compliance strategies for the new 2019-2024 Permit began when the new permit was issued in July 2019, in order to meet all requirements therein.

## D. Illicit Discharge Detection and Elimination

### Permit Requirements Summary (S5.B.3)

- Continue to maintain and update a map of the MS4, showing the location of all known and new connections to the MS4 authorized or approved by the Permittee; all known outfalls; the names and locations of all waters of the state that receive discharges from those outfalls; and areas served by discharges to ground.
- Implement an ordinance or other regulatory mechanism that prohibits illicit discharges and authorizes enforcement actions, including on private property. The ordinance shall include escalating enforcement procedures and actions.
- Implement an ongoing program designed to detect and identify illicit discharges and illicit connections into the Permittee's MS4.
- Publicize a hotline for public reporting of spills and other illicit discharges.
- Implement an ongoing program designed to address illicit discharges, including spills, and illicit connections into the MS4.
- Provide training to staff who are responsible for the identification, investigation, termination, cleanup, and reporting of illicit discharges, including spills, and illicit connections to conduct these activities.
- Track and maintain records of the activities conducted to meet the IDDE requirements.

The City has an Illicit Discharge Detection and Elimination (IDDE) program in place to detect, investigate, and eliminate all illicit connections and discharges to the City and Port MS4. This program is implemented through the coordination of City staff in multiple departments. The general public also plays an important contributing role through their use of the illicit discharge hotline. The phone number for the Illicit Discharge Hotline is posted on the City's website along with contact information for the Stormwater Manager.

The City tracks the system components of the MS4 through a continuously updated GIS system. This system provides information such as pipe size, length, and location. It also provides information about outfall locations to the waters of the state. The GIS Technician works with the Maintenance Supervisor and Maintenance Staff to track information about all stormwater maintenance activities that are performed, including screening and cleaning.

Ongoing outreach activities are completed each year to increase awareness about what constitutes an illicit discharge and the actions that can be taken to notify the stormwater utility of suspected illicit discharges. The outreach activities are covered in more detail in the Public Education and Outreach section above. During these outreach activities, the prevention of illicit discharges and the promotion of the illicit discharge hotline is a topic of focus.

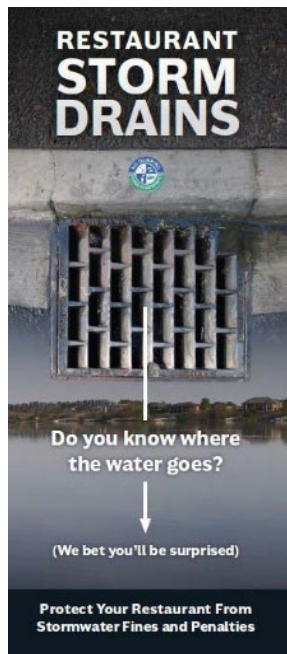
Through ongoing stormwater training, City and Port staff has continuing conversations about the IDDE program and uses this time to discuss any changes that may need to be



implemented to the program.

When necessary, the Public Works Department relies upon Title 16 of the Richland Municipal Code (RMC) to provide escalating enforcement actions including fines of up to \$100-\$5000/day. Title 16 of the RMC can be found at <http://www.codepublishing.com/WA/Richland/>. A summary of illicit discharge investigations completed during 2019 can be found in Appendix 3. In 2020, the City received complaints for 5 potential illicit discharges.

In 2016, the City created a new stormwater brochure specifically for business outreach. The creation and handout of this brochure completed one of the program goals for 2016. By actively communicating with businesses about the importance of Stormwater in our community, a greater appreciation for water quality is fostered. These brochures will continue to be handed out in 2024.



### **Program Elements For 2024**

In 2024 the existing program for Illicit Discharge Detection and Elimination will continue in accordance with S5.B.3 of the 2019-2024 Permit. Planning and implementation of compliance strategies for the new 2019-2024 Permit began when the new permit was issued in July 2019, in order to meet all requirements therein.

## **E. Construction Site Stormwater Runoff Control**

### **Permit Requirements Summary (S5.B.4)**

- Implement and enforce a program to reduce pollutants in any stormwater runoff to the MS4 from construction activities that disturb one acre or more, and from construction projects of less than one acre that are part of a larger common plan of development or sale.
- The Permittee shall implement an ongoing process for ensuring proper project review, inspection, and compliance by its own department and agencies. This process should incorporate consideration of potential water quality impacts.
- Implement an ordinance or other regulatory mechanism to require erosion and sediment controls, and other construction-phase stormwater pollution controls at new development and redevelopment projects.
- Implement procedures for site inspection and enforcement of construction stormwater pollution control measures.
- Provide adequate training for all staff involved in permitting, planning, and review.
- Provide information to construction site operators about training available on how to install and effectively maintain effective erosion and sediment controls.

As part of the City's and Port's SWMP, an ongoing program is in place to ensure that construction site stormwater runoff is being controlled at both public and privately funded construction projects. The City has adopted regulations, located in the Richland Municipal Code (RMC), which require construction sites to comply with City of Richland Standard Design Guidelines and the Stormwater Management Manual for Eastern Washington. Furthermore, all projects are required to have a Stormwater Pollution Prevention Plan (SWPPP) prepared prior to construction commencing. The portion of the RMC which applies to construction site stormwater runoff is found in Title 16, Chapter 16.06 and is published at this website, <http://www.codepublishing.com/WA/Richland/>.

Privately funded construction projects require a City of Richland issued construction permit. This permit is granted after members of the Public Works department review and approve the construction plans, including the SWPPP. Information for consultants/contractors about construction and post construction stormwater requirements is provided in a handout posted online and available in the Public Works Department.

## Program Elements For 2024

In 2024, the existing program for construction site stormwater runoff control will continue in accordance with S5.B.4 of the 2019-2024 Permit. Planning and implementation of compliance strategies for the new 2019-2024 Permit began when the new permit was issued in July 2019, in order to meet all requirements therein.

## **F. Post-Construction Stormwater Management for New Development and Redevelopment**

### **Permit Requirements Summary (S5.B.5)**

- Implement an ordinance or other regulatory mechanism that requires post-construction stormwater controls at new development and redevelopment projects.
- Implement procedures for site plan review which incorporate consideration of potential water quality impacts.
- Implement procedures for site inspection and enforcement of post-construction stormwater control measures.
- Provide adequate training for all staff involved in permitting, planning, review, inspection, and enforcement.
- Provide information to design professionals about training available on how to comply with the requirements of Appendix 1 and apply the BMPs described in the Stormwater Management Manual for Eastern Washington
- Keep records of projects, training, and information provided to design professionals.

The City's Municipal Code outlines the regulations for construction and post-construction stormwater management in Chapter 16.06. These regulations give the City the authority to:

- Require construction activities to comply with the City of Richland Design Guidelines and Construction Details and the Stormwater Management Manual for Eastern Washington.
- Require all projects to submit a Stormwater Pollution Prevention Plan.
- Require the property owner to be responsible for continual performance, operation, and maintenance of private stormwater facilities.
- Require an Operations and Maintenance plan for new, permanent stormwater facilities.
- Notifies that all permanent stormwater facilities, BMPs, O&M plans and records shall be subject to inspection by the City.
- Allows the Director, and his designee, the authority to conduct inspections, issues notices of violations, and implement other actions under this title.

City staff will continue to review site plans and stormwater pollution prevention plans (SWPPP) for all construction projects. An ongoing inspection program to determine which facilities need to be cleaned and/or repaired will continue. This inspection program will further be reinforced by the IDDE investigations and the post storm spot checks, which may provide an awareness of issues before the scheduled inspection takes place.

In 2017 the City adopted a new requirement to retain the 25-year storm event on site. This requirement is more stringent than the 10-year requirement required in the stormwater permit. In 2020, the City adopted a new design requirement of the 3-hour, 50-year storm at sag points, and the 3-hour, 25-year short duration storm for all other locations to adequately size pipes and inlets.

#### **Program Elements For 2024**

In 2024, the existing program for Post-Construction Stormwater Management for New Development and Redevelopment will continue in accordance with S5.B.5 of the 2019-2024 Permit. Planning and implementation of compliance strategies for the new 2019-2024 Permit began when the new permit was issued in July 2019, in order to meet all requirements therein.

## **G. Municipal Operations and Maintenance**

### Permit Requirements Summary (S5.B.6)

- Implement a schedule of municipal Operation and Maintenance activities (an O&M Plan). The O&M Plan is to be updated by August 1, 2017.
- The O&M Plan shall include appropriate pollution prevention and good housekeeping procedures for all of the following types of facilities:
  - Stormwater Collection System
  - Roads, Highways, and Parking
  - Vehicle Fleets
  - Municipal Buildings
  - Parks and Open Space
  - Construction Projects
  - Industrial Activities
  - Material, Equipment, and Maintenance Storage Areas
  - Flood Management Projects
  - Other Facilities Expected to Discharge Contaminated Runoff
- The O&M Plan shall include a schedule of inspections and requirements for record keeping pursuant to S9 Reporting and Recordkeeping.
- Provide training for all employees who have primary construction, operations, or maintenance job functions that are likely to impact stormwater quality.

The City's Operations and Maintenance (O&M) Plan was written in 2016. The implementation of this plan requires the coordination of multiple City departments. This coordination is outlined in the Internal Coordination Procedures document (Appendix 1).

In 2024 the stormwater maintenance crew will continue their screening and cleaning activities to ensure a fully functional MS4 and to meet the O&M Plan requirements.

Training for all staff who have construction, operations, or maintenance job functions will continue in 2024. Qualifying City owned facilities will continue their efforts to update facility specific O&M plans per the 2019-2024 permit.

## **H. Compliance with Total Maximum Daily Load Requirements**

### **Permit Requirements Summary (S7)**

- For applicable TMDLs listed in Appendix 2, affected Permittees shall comply with the specific requirements identified in Appendix 2.

As the City and Port do not outfall to any of the water bodies covered in Appendix 2 of the Permit, there are not any requirements to meet.

## **I. Monitoring and Assessment**

### **Permit Requirements Summary (S8)**

- All Permittees shall provide, in each annual report, a description of any stormwater monitoring or stormwater-related studies conducted by the Permittee during the reporting period.
- Each city and county shall collaborate with other Permittees to select, propose, develop, and conduct Ecology-approved studies to assess, on a regional or sub-regional basis, effectiveness of permit-required stormwater management program activities and best management practices.

The City of Richland participated with the other Permittees, the Department of Ecology and Evergreen StormH2O, in the Non-Vegetated Filtration Swale Effectiveness Study. During 2022-2023, the City was involved in planning efforts and the execution of the testing phase of the study. This study was considered by the Department of Ecology for a GROSS grant and was chosen as the #1 applicant for funding. The City participated as a member of the Technical Advisory Committee (TAC) and the study was completed in 2023.

During 2023, the City continued to participate in the Drain Rangers Education and Outreach Study, the City of Richland entered into another agreement with Franklin Conservation District and will continue to be involved in the program in 2024.

In 2024, the City of Richland will continue collaboration with other Permittees to complete Effectiveness Study requirements.

## **J. Reporting and Recordkeeping**

### **Permit Requirements Summary (S9)**

- No later than March 31 of each year beginning in 2016, each Permittee shall submit an annual report.
- Each Permittee is required to keep all records related to this permit for at least five years.
- Each Permittee shall make all records related to this permit and the Permittee's SWMP available to the public at reasonable times during business hours.

This SWMP Plan will be submitted along with the annual report questions. The annual report and this Plan will also be posted to the Port's website by May 31. The Port will continue keep records to ensure permit compliance.



# **Appendix 1**

## Stormwater Management Plan Inter- Departmental Coordination Procedures





## City of Richland Stormwater Management Plan Inter-Departmental Coordination Procedures

---

The City of Richland has implemented a Stormwater Management Program (SWMP) to increase awareness of stormwater related issues, protect nearby rivers, and meet the permit requirements of the Eastern Washington Phase II Municipal Stormwater Permit (Permit). This Permit is administered by the Washington State Department of Ecology. In an effort to fully implement the SWMP throughout the City's multiple departments, this internal coordination document has been created to provide structure and definition to the roles that each department will fulfill. This document is intended to satisfy permit requirements as described in Section S5.A.5.b.

Full descriptions of the program components can be found in the SWMP Plan, but a basic outline is as follows:

1. Public Education and Outreach
2. Public Involvement and Participation
3. Illicit Discharge Detection and Elimination
4. Construction Site Stormwater Runoff Control
5. Post-Construction Stormwater Management for New Development and Redevelopment
6. Municipal Operations and Maintenance

### Public Education and Outreach

Continually working to educate the general public, including businesses and students, about how the City's municipal separate storm sewer system (MS4) functions is an important component of the SWMP. Creating awareness that anything put into the City's MS4 could ultimately end up in the nearby Columbia and Yakima rivers is a foundational part of this outreach. Outreach activities include annual booths at local events, billing inserts, business outreach, news announcements, and website updates. In order to provide these activities, coordination is needed amongst the following positions.

| Public Education and Outreach    |   |
|----------------------------------|---|
| Public Works Department          | Assistant City Manager Department       |
| Public Works Director            | Assistant City Manager                  |
| Stormwater Manager               | Communications & Marketing Manager      |
| Public Works Executive Assistant | Environmental Education Coordinator     |
| Civil Engineer I                 | Communications and Marketing Specialist |

## Public Involvement and Participation

Providing opportunities for the public to have input on the development of the SWMP is a requirement of the Permit. Each year the City will post a draft version of the SWMP Plan on its website and provide an opportunity for comments electronically. An open house event may also be held during this comment period to allow an opportunity for individuals to ask questions and provide feedback directly to City staff. The procedure for completing this process will require coordination with the Communications and Marketing Manager and the Public Works Executive Assistant to update the website and to inform the public of their opportunity to comment on the program. The Civil Engineer I will collect and analyze the comments and coordinate with the Stormwater Manager and the Public Works Director to determine how best to address the comments.

| Public Involvement and Participation |                                    |
|--------------------------------------|------------------------------------|
| Public Works Department              | Assistant City Manager Department  |
| Public Works Director                | Assistant City Manager             |
| Stormwater Manager                   | Communications & Marketing Manager |
| Public Works Executive Assistant     | Support Specialist                 |
| Civil Engineer I                     |                                    |

## Illicit Discharge Detection and Elimination

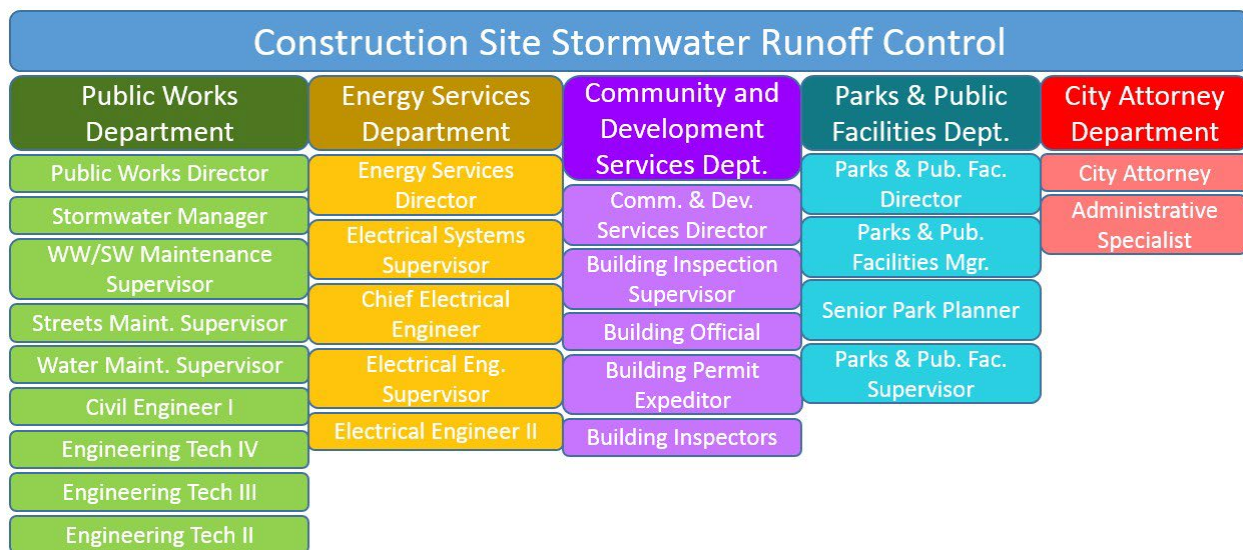
Detecting and eliminating illicit discharges is an important process needed to protect the MS4. The detection of illicit discharges is a shared responsibility of all city staff members who spend time in the field. The general public can also report illicit discharges through the illicit discharge hotline. All suspected illicit discharges reported by City employees and the general public are forwarded to the Public Works department. The investigation and resolution of these suspected illicit discharges is the responsibility of the Public Works department. In cases of continued non-compliance the City Attorney may need to participate when escalated enforcement is needed. The Public Works department is also responsible for ongoing programs to detect and identify illicit discharges, provide training to staff, and track and maintain records, including maps of the MS4.

## Construction Site Stormwater Runoff Control

The Permit requires that all permittees “implement and enforce a program to reduce pollutants in any stormwater runoff to the MS4 from construction activities.” This requirement applies to both public and

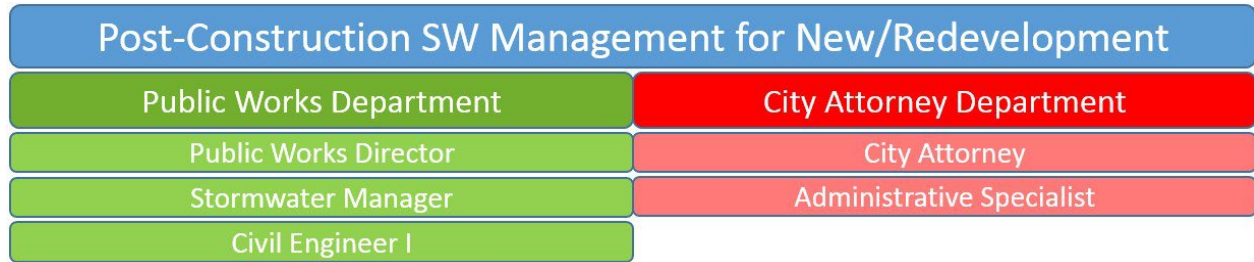
Private projects. Regulatory authority for this program is found in the City’s Municipal Code, Chapter 16.6. This chapter requires that all construction activities, except for small scale maintenance work, comply with the standards found in the City of Richland Standard Design Guidelines and Construction Details and the Stormwater Management Manual for Eastern Washington. Furthermore, all projects are required to submit a Stormwater Pollution Prevention Plan (SWPPP). Before issuing a construction permit, City staff complete a full plan review to ensure that the developer/contractor has a plan in place to meet all stormwater management requirements. After the construction permit has been issued and construction begins, members of City staff provide recurring project inspections. These staff members are Certified Erosion and Sediment Control Lead (CESCL) certified. When staff encounter extreme cases of continued non-compliance, the City Attorney may need to get involved to provide elevated enforcement.

To ensure that City staff are fully prepared for their duties, the City provides ongoing stormwater training to all team members who are, or have the potential to be, involved in construction projects with stormwater runoff. Furthermore, members of City staff who work in plan review and/or complete site inspections maintain their CESCL certification. The Construction Stormwater General Permit requires that site inspections for projects one acre or larger be completed by a staff member who is CESCL certified.



### Post-Construction Stormwater Management for New Development and Redevelopment

Post-construction stormwater management is achieved through internal coordination within the Public Works department. Continued inspection of stormwater facilities in the post-construction phase is the responsibility of Public Works staff. The maintenance of publicly owned stormwater facilities is also the responsibility of the Public Works department. However, the maintenance of privately owned stormwater facilities is the responsibility of the land owner per chapter 16.06.050 of the Richland Municipal Code. In the event that the owner of a private facility refuses to address deficiencies, then coordination with the City Attorney may be needed.

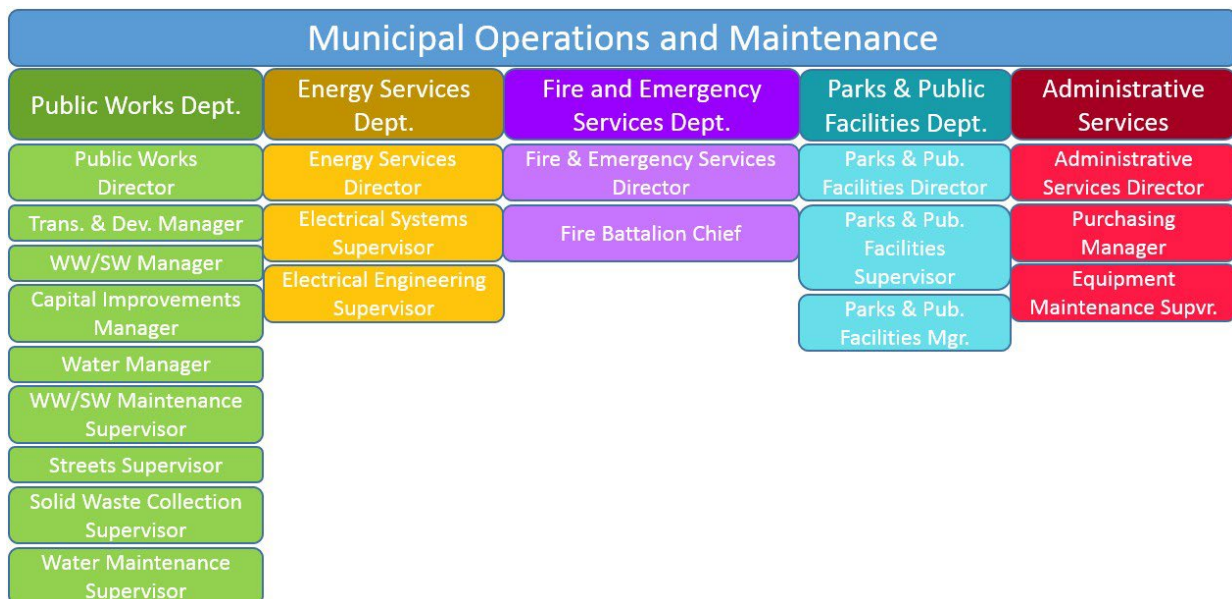


### Municipal Operations and Maintenance

Maintenance operations include ongoing training for City staff, MS4 maintenance, and the implementation of the Operations and Maintenance (O&M) Plan. This plan includes pollution prevention and good housekeeping procedures that must be implemented for:

1. Stormwater collection and conveyance system
2. Roads, highways, and parking lots
3. Vehicle fleets
4. Municipal buildings
5. Parks and open space
6. Construction projects
7. Industrial activities
8. Material storage areas, heavy equipment storage areas and maintenance areas
9. Flood management projects
10. Other facilities that would reasonably be expected to discharge contaminated runoff

Implementation of the O&M plan requires participation by multiple City departments. Provided below is an outline of the departments and managerial positions that need to participate to fully implement the O&M plan.



Also required is an ongoing maintenance program that focuses on screening and cleaning the MS4. This requires the Maintenance Supervisor to set a schedule for the maintenance team to ensure that the inspection and cleaning requirements of the Permit are met.

## **Summary**

In summary, this document has been created to provide a general outline of the positions and departments that must collaborate in order to fully implement the SWMP. As necessary, other City staff members, not listed in this document, may need to participate to increase the program's effectiveness and implementation

# **Appendix 2**

## Utility Billing Stormwater Insert

Additional information regarding the rules and regulations surrounding stormwater pollution can be found at:

## City of Richland

[www.ci.richland.wa.us/stormwater](http://www.ci.richland.wa.us/stormwater)

## Department of Ecology

[www.ecy.wa.gov/programs/wq/stormwater/](http://www.ecy.wa.gov/programs/wq/stormwater/)

## Environmental Protection Agency

[www.epa.gov/npdes/npdes-stormwater-program](http://www.epa.gov/npdes/npdes-stormwater-program)

**If you see someone dumping illegal substances down a City stormwater catch basin, please call the City's Illicit Discharge Hotline at 942-7480.**



City of Richland  
Wastewater/Stormwater Division  
PO Box 190, MS Z7  
Richland WA 99352



City of Richland  
Wastewater/Stormwater Division  
PO Box 190, MS Z7  
Richland WA 99352



# Stormwater 5-Minute Survey

## Our Commitment To You

The City of Richland is committed to protecting our local rivers, ponds and streams through our stormwater management activities. The citizens of Richland play an important role in protecting the Columbia and Yakima Rivers and Amon Wasteway from the impacts of discharges through the City's stormwater system.

We would appreciate your taking a moment to answer the following questions to help us better understand our stormwater program effectiveness.

## Stormwater Survey

Residents of Richland who participate in the survey by completing and returning this postage paid form will be entered in a drawing for one of the following gift cards:

- \$25 to Dutch Bros.
- \$25 to Freddy's
- \$25 to Graze

Survey must be returned by November 15, 2017 in order to be eligible for drawing. Winners will be announced and contacted by November 20, 2017.

To return survey form, fold in thirds with address and pre-paid postage facing out, then tape shut.

## Thank you!

1. Which of the following are common pollutants in the drainage off of City streets?

- a) Metals
- b) Asbestos
- c) Fertilizer
- d) Animal waste
- e) Petroleum products
- f) All of the above

2. Where is the stormwater from your neighborhood discharged?

- a) Sewers
- b) Columbia & Yakima Rivers and Amon Wasteway
- c) City parks
- d) Underground vault
- e) Neighborhood pond

3. How is stormwater treated before it reaches the river?

- a) Routed to wastewater plant
- b) Filtered through the ground or not at all
- c) With chlorine
- d) Mobile emergency treatment plants

4. Do you believe stormwater negatively impacts the water quality of our rivers?

- Yes
- No

5. What can you do to minimize stormwater pollution at home?

- a) Correctly dispose of household chemicals
- b) Wash vehicles on lawn or at commercial carwashes
- c) Pick up after pets
- d) All of the above

Please include additional comments in the space provided below:

---



---



---



---



---

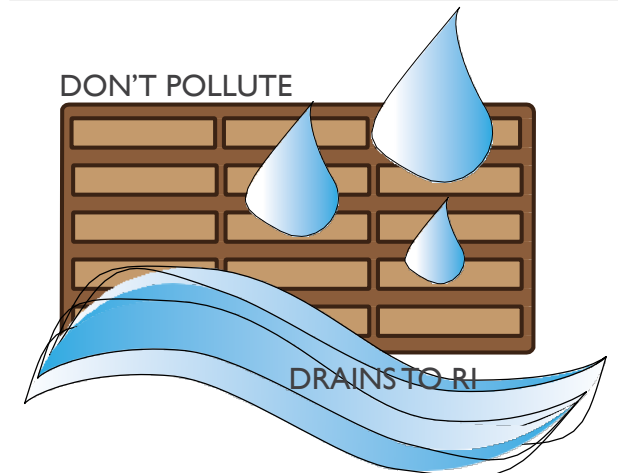
You must include your name, address and phone number to be entered in the drawing for the gift cards.

Name:

Address:

Phone:

Email:





# **Appendix 3**

## 2023 Illicit Discharge Investigations

# City of Richland - 2023 IDDE Report

| Jurisdiction name and permit number | Date incident discovered | Date beginning response | Date end response | How was the incident discovered or reported to you   | Discharge to MS4        | Street Address or Intersection | City     | Zip   | Pollutants Identified                                    | Source or Cause                                   | Correction/elimination methods used      |
|-------------------------------------|--------------------------|-------------------------|-------------------|--|-------------------------|--------------------------------|----------|-------|--|---|--|
| WAR046006                           | 1/30/2023                | 1/30/2023               | 1/31/2023         | Staff referral, MS4 inspection or screening          | No, Cleaned Up          | 4908 White Dr.                 | Richland | 99352 | Sediment/soil  | Landscape-related business                        | Clean-up, Education/technical assistance |
| WAR046006                           | 1/4/2023                 | 1/4/2023                | 1/5/2023          | Construction inspection                              | Yes, No Notice Required | Country Club Rd & Bellerive    | Richland | 99352 | Sediment/soil  | Construction activity                             | Clean-up, Education/technical assistance |
| WAR046006                           | 1/18/2023                | 1/18/2023               | 1/19/2023         | Construction inspection, MS4 inspection or screening | Yes, No Notice Required | 1936 Poplar St                 | Richland | 99352 | Sediment/soil  | Construction activity                             | Clean-up, Education/technical assistance |
| WAR046006                           | 4/4/2023                 | 4/4/2023                | 4/5/2023          | Construction inspection, MS4 inspection or screening | Yes, No Notice Required | 2480 Maggio Loop               | Richland | 99352 | Sediment/soil  | Landscape-related business, Construction activity | Clean-up, Education/technical assistance |
| WAR046006                           | 4/15/2023                | 4/14/2023               | 4/15/2023         | Construction inspection                              | No, Cleaned Up          | 2480 Maggio Loop               | Richland | 99352 | Other: Rock-Pile in the roadway.                         | Construction activity                             | Clean-up, Education/technical assistance |
| WAR046006                           | 4/14/2023                | 4/14/2023               | 4/14/2023         | Construction inspection                              | No, Cleaned Up          | 1340 Jolianna Dr               | Richland | 99352 | Other: Rock Pile located in the roadway.                 | Landscape-related business, Construction activity | Clean-up, Education/technical assistance |
| WAR046006                           | 5/2/2023                 | 5/3/2023                | 5/3/2023          | Construction inspection, MS4 inspection or screening | No, Cleaned Up          | 1430 Alice                     | Richland | 99352 | Sediment/soil  | Landscape-related business, Construction activity | Clean-up, Education/technical assistance |
| WAR046006                           | 5/5/2023                 | 5/5/2023                | 5/5/2023          | Construction inspection, MS4 inspection or screening | No, Cleaned Up          | 2236 Morency Dr                | Richland | 99352 | Other: Pile of bark in the roadway.                      | Landscape-related business, Construction activity | Clean-up, Education/technical assistance |
| WAR046006                           | 5/8/2023                 | 5/9/2023                | 5/9/2023          | Construction inspection, MS4 inspection or screening | No, Cleaned Up          | 439 Sundance Dr                | Richland | 99352 | Sediment/soil  | Landscape-related business, Construction activity | Clean-up, Education/technical assistance |
| WAR046006                           | 5/9/2023                 | 5/10/2023               | 5/10/2023         | Construction inspection, MS4 inspection or screening | Yes, No Notice Required | 2474 Maggio Loop               | Richland | 99352 | Other: Pile of rock in the roadway.                      | Landscape-related business                        | Clean-up, Education/technical assistance |
| WAR046006                           | 5/11/2023                | 5/12/2023               | 5/12/2023         | Construction inspection, MS4 inspection or screening | No, Cleaned Up          | 2831 Mackenzie Court           | Richland | 99352 | Other: Pile of rock in roadway.                          | Landscape-related business                        | Clean-up, Education/technical assistance |
| WAR046006                           | 5/12/2023                | 5/13/2023               | 5/15/2023         | Construction inspection, MS4 inspection or screening | No, Cleaned Up          | 361 Hanford St                 | Richland | 99352 | Other: Pile of rock in roadway.                          | Landscape-related business                        | Clean-up, Education/technical assistance |
| WAR046006                           | 5/11/2023                | 5/12/2023               | 5/12/2023         | Construction inspection, MS4 inspection or screening | No, Cleaned Up          | 2121 Hamilton Court            | Richland | 99352 | Sediment/soil, Other: Pile of rock and dirt on sidewalk. | Landscape-related business, Construction activity | Clean-up, Education/technical assistance |

## City of Richland - 2023 IDDE Report

|           |           |           |           |  |                         |                            |          |       |  |                            |  |
|-----------|-----------|-----------|-----------|--|-------------------------|----------------------------|----------|-------|--|----------------------------|--|
| WAR046006 | 5/19/2023 | 5/20/2023 | 5/20/2023 | Construction inspection, MS4 inspection or screening | No, Cleaned Up          | 1706 Meadow Hills Dr.      | Richland | 99352 | Other: Pile rock in the roadway on Queensgate Dr | Landscape-related business | Clean-up, Education/technical assistance |
| WAR046006 | 5/19/2023 | 5/20/2023 | 5/20/2023 | Construction inspection, MS4 inspection or screening | No, Cleaned Up          | 1886 Kapalua Ave           | Richland | 99352 | rock on the roadway.                             | Landscape-related business | Clean-up, Education/technical assistance |
| WAR046006 | 5/30/2023 | 5/31/2023 | 5/31/2023 | Construction inspection, MS4 inspection or screening | Yes, No Notice Required | 1401 George Washington Way | Richland | 99352 | Sewage/septage/pet waste/human waste             | Construction activity      | Clean-up, Education/technical assistance |
| WAR046006 | 5/30/2023 | 5/31/2023 | 5/31/2023 | Construction inspection, MS4 inspection or screening | No, Cleaned Up          | 153 Sherman St             | Richland | 99352 | Other: Pile of rock in the roadway.              | Landscape-related business | Clean-up, Education/technical assistance |
| WAR046006 | 5/19/2023 | 5/20/2023 | 5/20/2023 | Construction inspection, MS4 inspection or screening | No, Cleaned Up          | 534 Lazio Way              | Richland | 99352 | Other: Pile of rock in the roadway.              | Landscape-related business | Clean-up, Education/technical assistance |
| WAR046006 | 5/30/2023 | 5/31/2023 | 5/31/2023 | Construction inspection, MS4 inspection or screening | No, Cleaned Up          | 122 Riverwood Dr           | Richland | 99352 | Other: Pile of rock in roadway.                  | Landscape-related business | Clean-up, Education/technical assistance |
| WAR046006 | 6/2/2023  | 6/3/2023  | 6/3/2023  | Construction inspection, MS4 inspection or screening | No, Cleaned Up          | 573 Lazio Way              | Richland | 99352 | Other: Rock pile in the roadway.                 | Landscape-related business | Clean-up, Education/technical assistance |
| WAR046006 | 6/15/2023 | 6/21/2023 | 6/16/2023 | Construction inspection, MS4 inspection or screening | No, Cleaned Up          | 1009 Jurupa St             | Richland | 99352 | Other: Pile of rock in roadway.                  | Landscape-related business | Clean-up, Education/technical assistance |
| WAR046006 | 7/5/2023  | 7/6/2023  | 7/6/2023  | Construction inspection, MS4 inspection or screening | No, Cleaned Up          | 2223 Harris Rd             | Richland | 99352 | Other: Rock pile in roadway.                     | Landscape-related business | Clean-up, Education/technical assistance |
| WAR046006 | 7/18/2023 | 7/19/2023 | 7/19/2023 | Construction inspection, MS4 inspection or screening | No, Cleaned Up          | 312 Saint St               | Richland | 99352 | Sediment/soil                                    | Landscape-related business | Clean-up, Education/technical assistance |
| WAR046006 | 7/18/2023 | 7/19/2023 | 7/19/2023 | Construction inspection, MS4 inspection or screening | No, Cleaned Up          | 5061 Smitty Road           | Richland | 99352 | Other: Rock and track out in roadway.            | Landscape-related business | Clean-up, Education/technical assistance |
| WAR046006 | 7/21/2023 | 7/24/2023 | 7/24/2023 | Construction inspection, MS4 inspection or screening | No, Cleaned Up          | 1079 Klititat St           | Richland | 99352 | Other: Pile of rock in roadway                   | Landscape-related business | Clean-up, Education/technical assistance |
| WAR046006 | 7/19/2023 | 7/24/2023 | 7/24/2023 | ERTS referral  | Yes, No Notice Required | 1329 Lee Blvd              | Richland | 99352 | Soap or cleaning chemicals                       | Mobile business            | Clean-up, Education/technical assistance |

## City of Richland - 2023 IDDE Report

|           |            |            |            |                                     |                         |                            |          |       |   |                                      |  |
|-----------|------------|------------|------------|-------------------------------------|-------------------------|----------------------------|----------|-------|---|--------------------------------------|--|
| WAR046006 | 7/25/2023  | 7/26/2023  | 7/26/2023  | Staff referral                      | Yes, No Notice Required | Chinook Dr & Tillamook Dr  | Richland | 99352 | Other: Concrete washout in the catchbasin                         | Construction activity                | Clean-up                                 |
| WAR046006 | 7/31/2023  | 8/1/2023   | 8/1/2023   | Staff referral                      | No, Cleaned Up          | 1415 George Washington Way | Richland | 99352 | Food-related oil/grease   | Mobile business                      | Clean-up, Education/technical assistance |
| WAR046006 | 8/16/2023  | 8/16/2023  | 8/17/2023  | Construction inspection             | Yes, No Notice Required | 2608 Clark Ridge           | Richland | 99352 | Sediment/soil   | Landscape-related business           | Clean-up, Education/technical assistance |
| WAR046006 | 8/28/2023  | 9/7/2023   | 9/11/2023  | Pollution hotline (phone, web, app) | Yes, No Notice Required | 1536 Rimrock Ave           | Richland | 99352 | Neighbors saw the residence                                       | Other: Residence of 1536 Rimrock Ave | Clean-up, Education/technical assistance |
| WAR046006 | 9/7/2023   | 9/18/2023  | 9/18/2023  | Construction inspection             | Yes, No Notice Required | 1713 Citrus                | Richland | 99352 | Other: Concrete washout in catchbasin                             | Construction activity                | Clean-up, Education/technical assistance |
| WAR046006 | 10/18/2023 | 10/20/2023 | 10/19/2023 | Staff referral                      | Yes, No Notice Required | 912 Cottonwood Dr          | Richland | 99352 | Other: Dirt and concrete washout was dumped in the storm manhole. | Construction activity                | Clean-up, Education/technical assistance |
| WAR046006 | 10/31/2023 | 11/1/2023  | 11/1/2023  | Construction inspection             | Yes, No Notice Required | 825 Goethals               | Richland | 99352 | Other: Pile of dirt and rock in the roadway.                      | Construction activity                | Clean-up, Education/technical assistance |
| WAR046006 | 10/30/2023 | 11/1/2023  | 11/1/2023  | Direct report to your staff         | Yes, No Notice Required | 701 Parkway                | Richland | 99352 | Food-related oil/grease   | Food-related business                | Clean-up, Education/technical assistance |
| WAR046006 | 11/3/2023  | 11/3/2023  | 11/4/2023  | Direct report to your staff         | Yes, No Notice Required | 1335 Lee Blvd              | Richland | 99352 | Food-related oil/grease   | Food-related business                | Clean-up, Education/technical assistance |
| WAR046006 | 11/8/2023  | 11/8/2023  | 11/9/2023  | Staff referral                      | No, Cleaned Up          | 74 Newcomer                | Richland | 99352 | Other: Rock Pile in the roadway                                   | Landscape-related business           | Clean-up, Education/technical assistance |
| WAR046006 | 11/29/2023 | 11/30/2023 | 11/30/2023 | Staff referral                      | No, Cleaned Up          | 1196 Brentwood Ave         | Richland | 99352 | Other: Pile of rock in the roadway                                | Landscape-related business           | Clean-up, Education/technical assistance |
| WAR046006 | 12/19/2023 | 12/20/2023 | 12/20/2023 | Staff referral                      | Yes, No Notice Required | 1379 George Washington Way | Richland | 99352 | Food-related oil/grease   | Food-related business                | Clean-up, Education/technical assistance |

## City of Richland - 2023 IDDE Report

|           |            |            |            |  |                         |                            |          |       |  |  |  |
|-----------|------------|------------|------------|--|-------------------------|----------------------------|----------|-------|--|--|--|
| WAR046006 | 12/19/2023 | 12/21/2023 | 12/21/2023 | Construction inspection                              | No, Cleaned Up          | 1639 Livorno Ave           | Richland | 99352 | Other: Two piles of rock in the roadway with mud.                              | Landscape-related business   | Clean-up, Education/technical assistance   |
| WAR046006 | 12/20/2023 | 12/21/2023 | 12/21/2023 | Construction inspection, MS4 inspection or screening | No, Cleaned Up          | 557 Stevens Dr             | Richland | 99352 | Other: mud track out from construction site.                                   | Construction activity  | Clean-up, Education/technical assistance, Other: Construction entrance was fixed |
| WAR046006 | 2/1/2023   | 2/1/2023   | 2/28/2023  | Business inspection                                  | Yes, No Notice Required | 43 Columbia Pointe Dr      | Richland | 99352 | Food-related oil/grease  | Food-related business  | Clean-up, Education/technical assistance   |
| WAR046006 | 2/7/2023   | 2/8/2023   | 2/8/2023   | Staff referral                                       | Yes, No Notice Required | 1606 Salerno Lane          | Richland | 99352 | Sediment/soil  | Other: Storm event washed dirt/soil into the roadway.                          | Clean-up   |
| WAR046006 | 3/3/2023   | 3/4/2023   | 3/4/2023   | Construction inspection                              | No, Cleaned Up          | 1346 Jolianna Dr           | Richland | 99352 | Other: Rock pile in roadway.   | Landscape-related business   | Clean-up, Education/technical assistance   |
| WAR046006 | 4/4/2023   | 4/5/2023   | 4/5/2023   | Construction inspection                              | No, Cleaned Up          | 332 Riverwood St           | Richland | 99352 | Other: Damage to the storm ditch   |  | Other: Contractor reconstructed the drainage ditch.                              |
| WAR046006 | 4/27/2023  | 5/1/2023   | 5/1/2023   | Staff referral                                       | Yes, No Notice Required | 1549 George Washington     | Richland | 99352 | Other: Water leak which was allowing chlorinated water enter the storm system. | Other: Water leak which was allowing chlorinated water enter the storm system. | Other: Fixed the water leak.   |
| WAR046006 | 5/2/2023   | 5/3/2023   | 5/3/2023   | Construction inspection                              | No, Cleaned Up          | 2363 Harris                |          |       | Sediment/soil  | Landscape-related business   | Clean-up, Education/technical assistance   |
| WAR046006 | 5/2/2023   | 5/3/2023   | 5/3/2023   | Staff referral                                       | Yes, No Notice Required | 1401 George Washington Way | Richland | 99352 | Sewage/septage/pet waste/human waste   | Other accident/spill   | Clean-up, Education/technical assistance   |
| WAR046006 | 5/26/2023  | 5/27/2023  | 5/27/2023  | Staff referral                                       | Yes, No Notice Required | 1401 George Washington Way | Richland | 99352 | Other: Watermain broke and discharged into the City storm system.              | Other accident/spill   | Other: Watermain was fixed.  |

## City of Richland - 2023 IDDE Report

|           |            |            |            |                         |                         |                       |          |       |   |                       |  |
|-----------|------------|------------|------------|-------------------------|-------------------------|-----------------------|----------|-------|---|-----------------------|--|
| WAR046006 | 6/6/2023   | 6/13/2023  | 6/13/2023  | Construction inspection | No, Cleaned Up          | 2149 Davidson         | Richland | 99352 | Other: Pile of concrete and debris in roadway.                      | Construction activity | Clean-up, Education/technical assistance   |
| WAR046006 | 7/24/2023  | 7/25/2023  | 7/25/2023  | Construction inspection | No, Cleaned Up          | 1238 Meadow Hills Dr. | Richland | 99352 | Other: Pile of rock in the roadway.                                 | Construction activity | Clean-up, Education/technical assistance   |
| WAR046006 | 10/13/2023 | 10/13/2023 | 10/13/2023 | Staff referral          | Yes, No Notice Required | 2478 Falconcrest Loop | Richland | 99352 | Other: Draining chlorinated pool water into the City's storm drain. | Mobile business       | Education/technical assistance, Other: Stop draining pool water to the catchbasin. |
| WAR046006 | 12/15/2023 | 12/16/2023 | 12/16/2023 | Construction inspection | No, Cleaned Up          | 426 Riverwood Dr      | Richland | 99352 | Sediment/soil   | Construction activity | Clean-up, Education/technical assistance   |

# **Appendix 4**

Port of Benton Interlocal Agreement

## INTERLOCAL AGREEMENT

This AGREEMENT, made and entered into this 4<sup>th</sup> ~~26<sup>th</sup>~~ day of April ~~February~~ 2007, between the City of Richland, a Washington Municipal Corporation (hereafter called the "City"), and the Port of Benton, a Washington Municipal Corporation (hereinafter called the "Port"), collectively hereinafter referred to as the "PARTIES".

WHEREAS, the City created a stormwater utility in March 1998 to fund operations, maintenance, capital improvements and administration of its stormwater conveyance and treatment facilities. Operations and maintenance activities include street sweeping, inlet structure and pipeline cleaning, erosion control, etc.; and

WHEREAS, the City established stormwater rates for residential properties in 1998 and commercial properties in 2001; and

WHEREAS, the Port, as owner of commercial properties within the City limits, has been a customer of the City's stormwater utility since 2001; and

WHEREAS, the Port owns and maintains public streets and stormwater conveyance facilities within the City limits; and

WHEREAS, the United States Environmental Protection Agency (EPA) issued Phase II Stormwater regulations under the authority of the Clean Water Act and published in the Federal Register in December 1999; and

WHEREAS, the EPA's regulations name the City of Richland's municipal separate storm sewer system as subject to the Phase II regulations; and

WHEREAS, the Washington State Department of Ecology administers the Phase II regulations in Washington State and has prepared an Eastern Washington Phase II General Stormwater National Pollution Discharge Elimination System (NPDES) Permit that will enforce the Federal Phase II requirements and state water quality regulations on the City's municipal separate storm sewer system; and

WHEREAS, the Washington State Department of Ecology's Phase II NPDES General Permit requires compliance by the Port as a secondary Permittee; and

WHEREAS, the Port desires to contract for stormwater services required to comply with the EPA and Ecology regulations; and

WHEREAS, the City has used funding supplied by its stormwater utility to prepare for compliance with the EPA and Ecology regulations; and

WHEREAS, the City can cost-effectively oversee regulatory compliance for the Port-owned stormwater facilities; and

WHEREAS, RCW 39.34 authorizes interlocal agreements between Washington municipalities



**City of Richland - Port of Benton Stormwater Agreement**

**NOW THEREFORE, in consideration for the mutual covenants, conditions, and terms contained herein, the said PARTIES hereby enter into this agreement as follows:**

- 1. The City will provide, under funding from its stormwater utility, street sweeping services on Port-owned public streets to the same standards and frequency as to City-owned public streets. The Port grants the City a right of entry to Port-owned public streets to allow completion of this service.**
- 2. The City will provide, under funding from its stormwater utility, stormwater conveyance system cleaning and maintenance to the same standards and frequency as to City-owned conveyance system facilities. The Port grants the City a right of entry to its stormwater conveyance facilities to allow completion of this service.**
- 3. The City will repair damage to Port-owned streets and stormwater conveyance facilities caused by its implementation of No.'s 1 and 2 above.**
- 4. The Port will provide the City with current data on its leased properties and assist the City in developing billing practices for collecting stormwater utility revenues from Port-owned facilities.**
- 5. The City will correct stormwater utility billings for Port-owned facilities by March 1, 2007 in accordance with parcel data provided by the Port and reviewed by the City.**
- 6. The City will exempt Port-owned public streets and airport facilities utilized primarily by aircraft from the City's stormwater rates.**
- 7. The Port will fund City stormwater activities through payment of the City's stormwater utility rates as adopted by City Council. In establishing stormwater utility rates the City shall treat Port facilities the same as other properties of similar land use within the City. The Port will make payment no later than March 30, 2007 so that all City stormwater utility accounts for Port-owned properties shall be current and without delinquent charges. The City will waive any pending late payment charges on stormwater accounts for Port-owned facilities.**
- 8. Within 180 days of the date of this agreement the Port will provide the City with its most current stormwater facility mapping data for inclusion into the City's stormwater facilities geographical information system (GIS) maps. After the City inputs the Port facilities into its GIS maps the Port will review the maps for accuracy and direct the City to any required corrections.**
- 9. Within 180 days of execution of this agreement the City shall inspect Port-owned stormwater conveyance facilities. The City shall notify the Port of all detected defects. The Port shall be responsible for correction of all identified defects. Once Port repairs are accepted by the City, the City will perform ongoing maintenance and repairs of Port-owned conveyance facilities.**

**Since the scope and cost of the defects are unknown at the date of this agreement the City and Port agree that they will evaluate the list of defects after they are identified by the City. The City and Port may elect to negotiate a schedule for completion of repairs or to terminate this agreement if:**

- a. The Port determines that the investment required to repair its system defects is too high to justify the benefits provided by the City's stormwater services.**
  - b. The City determines that the cost of ongoing maintenance of Port facilities is too high to justify extending stormwater services to the Port.**
- 10. The Port shall indemnify and hold the City harmless from and against all claims, damages, losses and expenses including attorney fees and court costs, for injury to persons or damage to property which results from or is caused by the negligent or willful act or omission of the Port, its agents or employees.**

**City of Richland - Port of Benton Stormwater Agreement**

**The City shall indemnify and hold the Port, its employees and agents harmless from and against all claims, damages, losses and expenses including attorney fees and court costs, for injury to persons or damage to property which results from or is caused by the negligent or willful act or omission of the City, its subcontractors, agents or employees.**

**In the event it is determined that the injury to persons or damage to property is caused in part by the negligent act or omission of both the Port and City, then each party shall be liable only to the extent of its percentage of fault. Each party shall contribute to the payment of damages, attorney fees and costs in the same percentage as its percentage of fault in causing the injuries or damages.**

- 11. The City will, through funding from its stormwater utility, apply its NPDES Phase II General Stormwater Permit compliance programs to Port-owned stormwater conveyance system facilities. The City agrees to create and administer programs to achieve compliance with Section S6 of the NPDES Phase II permit for Port-owned facilities. The City will prepare program documents and reports as required by the NPDES Phase II permit for Port owned facilities. The Port will cooperate by supplying the City information about its operations and facilities necessary for preparation of compliance documents.**
- 12. The Port will supply the City with all data necessary to achieve compliance with the Washington State Department of Ecology Underground Injection Control Rule for Port-owned stormwater drywells and stormwater injection facilities.**
- 13. The City will include Port-owned stormwater conveyance facilities in any updates to its City-wide Stormwater Management Plan. The City's first Stormwater Management Plan was completed in 2005. There is no scheduled update as of the date of this agreement. The City shall submit any updates to its Stormwater Management Plan for Port review and approval. Port approval of a City Stormwater Management Plan shall not be unreasonably withheld.**
- 14. The City will fund and complete capital improvements to Port-owned stormwater conveyance facilities required by EPA and Ecology regulations or included in a Council adopted Stormwater Management Plan. The City shall submit proposed capital improvements to Port-owned facilities to the Port for review and approval. Port approval of a capital improvement to Port-owned facilities shall not be unreasonably withheld.**
- 15. The Port shall grant the City, without cost to the City, easements and rights-of-way required to implement stormwater construction and maintenance activities.**
- 16. The Port may terminate this agreement by giving the City ninety (90) days written notice of termination. Upon termination, the City shall be relieved of the obligation to provide the services specified in this agreement and the Port shall be responsible for compliance with all stormwater regulations affecting the Port property and facilities.**

**This agreement shall not be deemed or construed to be an agreement by the Port as to the validity or enforceability of the Stormwater ordinances adopted by the City or as a waiver of any rights of the Port or its tenants or lessees to contest or challenge the City's Stormwater ordinances.**

**IN WITNESS WHEREOF, the PARTIES hereto have executed this AGREEMENT as of the day and year above written.**

**CITY OF RICHLAND**

By:

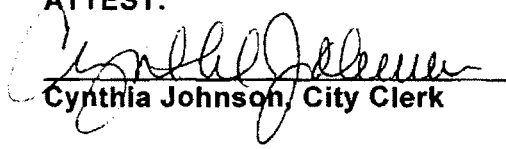
  
\_\_\_\_\_  
John C. Darrington,  
City Manager

**PORT OF BENTON**

By:

  
\_\_\_\_\_  
Scott D. Keller,  
Executive Director

**ATTEST:**

  
\_\_\_\_\_  
Cynthia Johnson, City Clerk

**APPROVED AS TO FORM:**

  
\_\_\_\_\_  
Thomas O. Lampson, City Attorney

# **Appendix 5**

## 2023 Franklin Conservation District Education Report

Franklin Conservation District Education Report  
 Jr. Drain Rangers, Drain Rangers, and Wheat Week  
 January – June 2023

| Jr. Drain Rangers          | # Students   | # Teachers | # Lessons |
|----------------------------|--------------|------------|-----------|
| <b>Benton County</b>       | <b>1,478</b> | <b>93</b>  | <b>78</b> |
| <b>Kennewick</b>           | <b>738</b>   | <b>45</b>  | <b>37</b> |
| Canyon View Elementary     | 60           | 6          | 3         |
| Cascade Elementary         | 96           | 4          | 4         |
| Cottonwood Elementary      | 147          | 9          | 8         |
| Hawthorne Elementary       | 167          | 10         | 8         |
| Lincoln Elementary         | 70           | 4          | 4         |
| Ridgeview Elementary       | 59           | 5          | 3         |
| Southgate Elementary       | 79           | 4          | 4         |
| Sunset View Elementary     | 60           | 3          | 3         |
| <b>Richland</b>            | <b>448</b>   | <b>28</b>  | <b>24</b> |
| Jason Lee Elementary       | 86           | 4          | 4         |
| Jefferson Elementary       | 74           | 4          | 4         |
| Lewis and Clark Elementary | 63           | 3          | 3         |
| Marcus Whitman             | 64           | 8          | 4         |
| Orchard Elementary         | 88           | 5          | 5         |
| Sacajawea Elementary       | 73           | 4          | 4         |
| <b>West Richland</b>       | <b>292</b>   | <b>20</b>  | <b>17</b> |
| Desert Sky Elementary      | 152          | 10         | 9         |
| Tapteal Elementary         | 70           | 4          | 4         |
| Wiley Elementary           | 70           | 6          | 4         |
| <b>Franklin County</b>     | <b>311</b>   | <b>22</b>  | <b>15</b> |
| <b>Pasco</b>               | <b>311</b>   | <b>22</b>  | <b>15</b> |
| James McGee Elementary     | 85           | 10         | 5         |
| McClintock Elementary      | 106          | 7          | 5         |
| Whittier Elementary        | 120          | 5          | 5         |
| <b>Grand Total</b>         | <b>1,789</b> | <b>115</b> | <b>93</b> |

| Drain Rangers           | # Students | # Teachers | # of Lessons |
|-------------------------|------------|------------|--------------|
| <b>Benton County</b>    | <b>285</b> | <b>12</b>  | <b>12</b>    |
| <b>Kennewick</b>        | <b>113</b> | <b>5</b>   | <b>5</b>     |
| Canyon View Elementary  | 38         | 2          | 2            |
| Southgate Elementary    | 75         | 3          | 3            |
| <b>Richland</b>         | <b>150</b> | <b>6</b>   | <b>6</b>     |
| White Bluffs Elementary | 150        | 6          | 6            |
| <b>West Richland</b>    | <b>22</b>  | <b>1</b>   | <b>1</b>     |
| Wiley Elementary        | 22         | 1          | 1            |
| <b>Franklin County</b>  | <b>153</b> | <b>7</b>   | <b>6</b>     |

Franklin Conservation District Education Report  
 Jr. Drain Rangers, Drain Rangers, and Wheat Week  
 January – June 2023

|                            |            |           |           |
|----------------------------|------------|-----------|-----------|
| <b>Pasco</b>               | <b>153</b> | <b>7</b>  | <b>6</b>  |
| Mark Twain Elementary      | 101        | 5         | 4         |
| Ruth Livingston Elementary | 52         | 2         | 2         |
| <b>Grand Total</b>         | <b>438</b> | <b>19</b> | <b>18</b> |

| Wheat Week                 | # Students | # Teachers | # Weeks  |
|----------------------------|------------|------------|----------|
| <b>Kennewick</b>           | <b>272</b> | <b>12</b>  | <b>4</b> |
| Amon Creek Elementary      | 113        | 5          | 1        |
| Bethlehem Lutheran School  | 16         | 1          | 1        |
| Cascade Elementary         | 84         | 3          | 1        |
| Ridgeview Elementary       | 59         | 3          | 1        |
| <b>Pasco</b>               | <b>323</b> | <b>18</b>  | <b>4</b> |
| Emerson Elementary         | 53         | 5          | 1        |
| Mark Twain Elementary      | 81         | 6          | 1        |
| McGee Elementary           | 82         | 3          | 1        |
| Ruth Livingston Elementary | 107        | 4          | 1        |
| <b>Richland</b>            | <b>103</b> | <b>4</b>   | <b>1</b> |
| White Bluffs Elementary    | 103        | 4          | 1        |
| <b>Grand Total</b>         | <b>698</b> | <b>34</b>  | <b>9</b> |

Teacher Workshops:

February 1 – Drain Rangers – 13 teachers

April 4 – Drain Rangers – 11 teachers

June 20 – Drain Rangers – 6 teachers

Total students taught between January and June 2023 = 2,925

Total teachers taught between January and June 2023 = 198