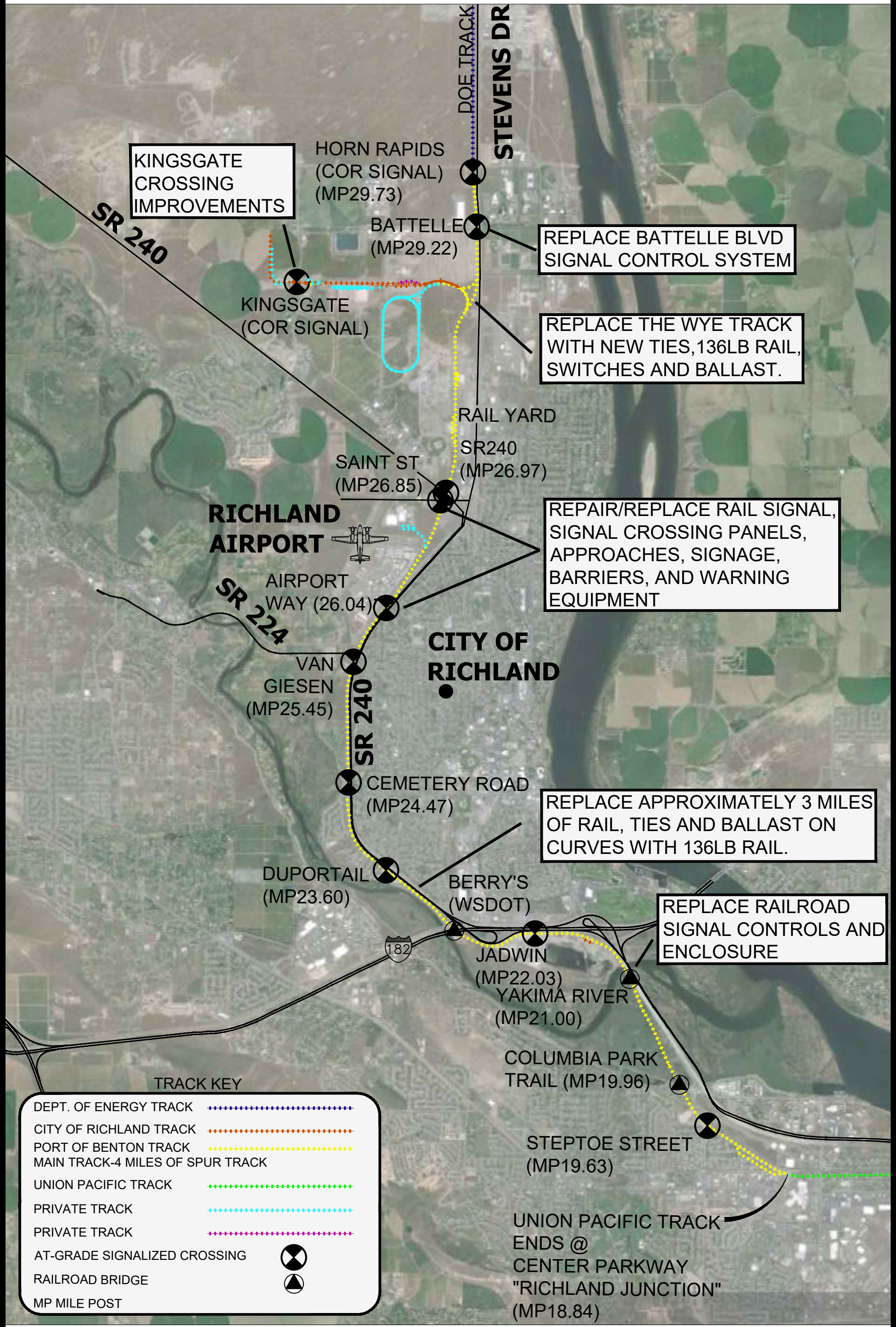


**CALL FOR PROJECTS -CRISI 2022
SYSTEM MAP-PORT OF BENTON TRACK**



KINGSGATE CROSSING IMPROVEMENTS

HORN RAPIDS (COR SIGNAL) (MP29.73)

REPLACE BATTELLE BLVD SIGNAL CONTROL SYSTEM

REPLACE THE WYE TRACK WITH NEW TIES, 136LB RAIL, SWITCHES AND BALLAST.

REPAIR/REPLACE RAIL SIGNAL, SIGNAL CROSSING PANELS, APPROACHES, SIGNAGE, BARRIERS, AND WARNING EQUIPMENT

REPLACE APPROXIMATELY 3 MILES OF RAIL, TIES AND BALLAST ON CURVES WITH 136LB RAIL.

REPLACE RAILROAD SIGNAL CONTROLS AND ENCLOSURE

TRACK KEY	
DEPT. OF ENERGY TRACK	
CITY OF RICHLAND TRACK	
PORT OF BENTON TRACK	
MAIN TRACK-4 MILES OF SPUR TRACK	
UNION PACIFIC TRACK	
PRIVATE TRACK	
PRIVATE TRACK	
AT-GRADE SIGNALIZED CROSSING	
RAILROAD BRIDGE	
MP MILE POST	