



## **RICHLAND AIRPORT – ELECTRICAL REPLACEMENT PROJECT**

### **Weekly Construction Update**

Project Contact - Roger Wright, Project Manager

[richlandairport@portofbenton.com](mailto:richlandairport@portofbenton.com), 509-375-3060

### **Construction Schedule for the Week of September 6 - 9, 2022**

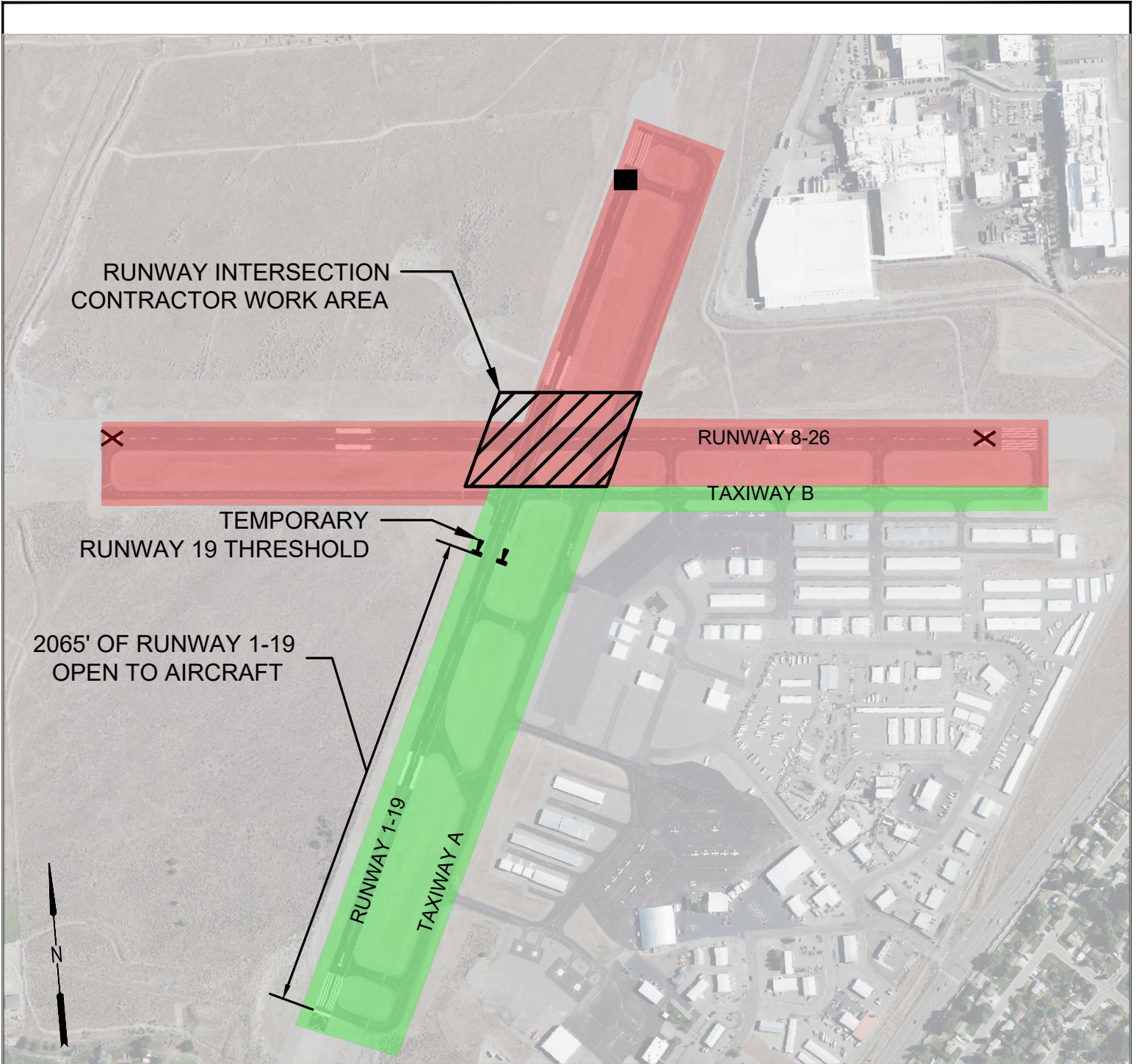
- ∇ **Runway 8-26 Runway Closure**
- ∇ **Runway 1-19 shortened to 2,065 feet with displaced threshold south of Runway 8-26**

Tuesday, September 6 at 6 a.m., the electrical contractor will be moving into the intersection of the runways. Over the next two weeks, Runway 1-19 will be shortened to 2,065 feet with a displaced threshold south of the runway's intersection. Runway 8-26 will be completely closed. The runways will be open over the weekend of September 10-11.

The contractor will be focusing on all electrical work within the intersection. On Tuesday, September 6 at 6 a.m., the contractor will reduce Runway 1-19 to 2,065 feet south of the runway intersection and will then close Runway 8-26. The shortened Runway 1-19 will not have lights or navigation aids. During this period of time, Taxiway A, south of Taxiway B, and Taxiway B east of Runway 1-19, will be open. *(See exhibit.)* This will allow an additional run-up area on Runway 1-19 north of the displaced threshold.

There will be a lot of construction activity during this two week period. Please be very cautious and aware of the contractor's activity. Additionally, please be aware of and cautious of the low profile barricades in the vicinity of the reduced Runway 1-19. During the closure, regular radio calls will be made when any aircraft identifies Runway 1-19 as their destination. Please make the effort to notify pilots that you know may not be familiar with our construction project.

The week of September 19-23, Runway 8-26 will be fully open but will not have lights until Friday, September 23.



**NOTE:**

THE INCLUDED FIGURE SHOWS THE AREAS OF THE AIRPORT THAT WILL BE OPEN (GREEN) AND CLOSED (RED) TO AIRCRAFT DURING THE RUNWAY INTERSECTION WORK RELATED TO THE UPCOMING AIRPORT IMPROVEMENTS CONSTRUCTION PROJECT. THE CONTRACTOR WILL BE ALLOWED TO WORK IN THE RUNWAY INTERSECTION WORK AREA FOR A TOTAL OF 10 WEEK DAYS. THE WORK WILL OCCUR MONDAY AT 6:00 AM UNTIL FRIDAY AT 4:00 PM FOR TWO CONSECUTIVE WEEKS. NO WEEKEND WORK WILL OCCUR. ALL TAXIWAYS AND BOTH RUNWAYS (FULL LENGTH) WILL BE OPEN TO AIRCRAFT OVER THE WEEKENDS.

**LEGEND**

- RUNWAY/TAXIWAY OPEN TO AIRCRAFT
- RUNWAY/TAXIWAY CLOSED TO AIRCRAFT



PORT OF BENTON  
 RICHLAND AIRPORT  
 ELECTRICAL REPLACEMENT PROJECT

RUNWAY INTERSECTION CLOSURE

