



RICHLAND AIRPORT – ELECTRICAL REPLACEMENT PROJECT

As Part of the Richland Airport Electrical Replacement Project, the Port will be issuing these weekly construction updates to keep the Airport Users as well informed as possible in our attempt to limit the impact to the airport users.

Weekly Construction Update

Project Contact - Roger Wright, Project Manager
richlandairport@portofbenton.com, 509-375-3060

Construction Schedule for the Week of August 15, 2022

The contractor has moved to the west end of Runway 8-26 for most of their work this week.

Runway 8-26 and Taxiway B will be closed Monday morning, August 15th beginning at 6 a.m., and will be signed closed at both ends of the runway intersection.

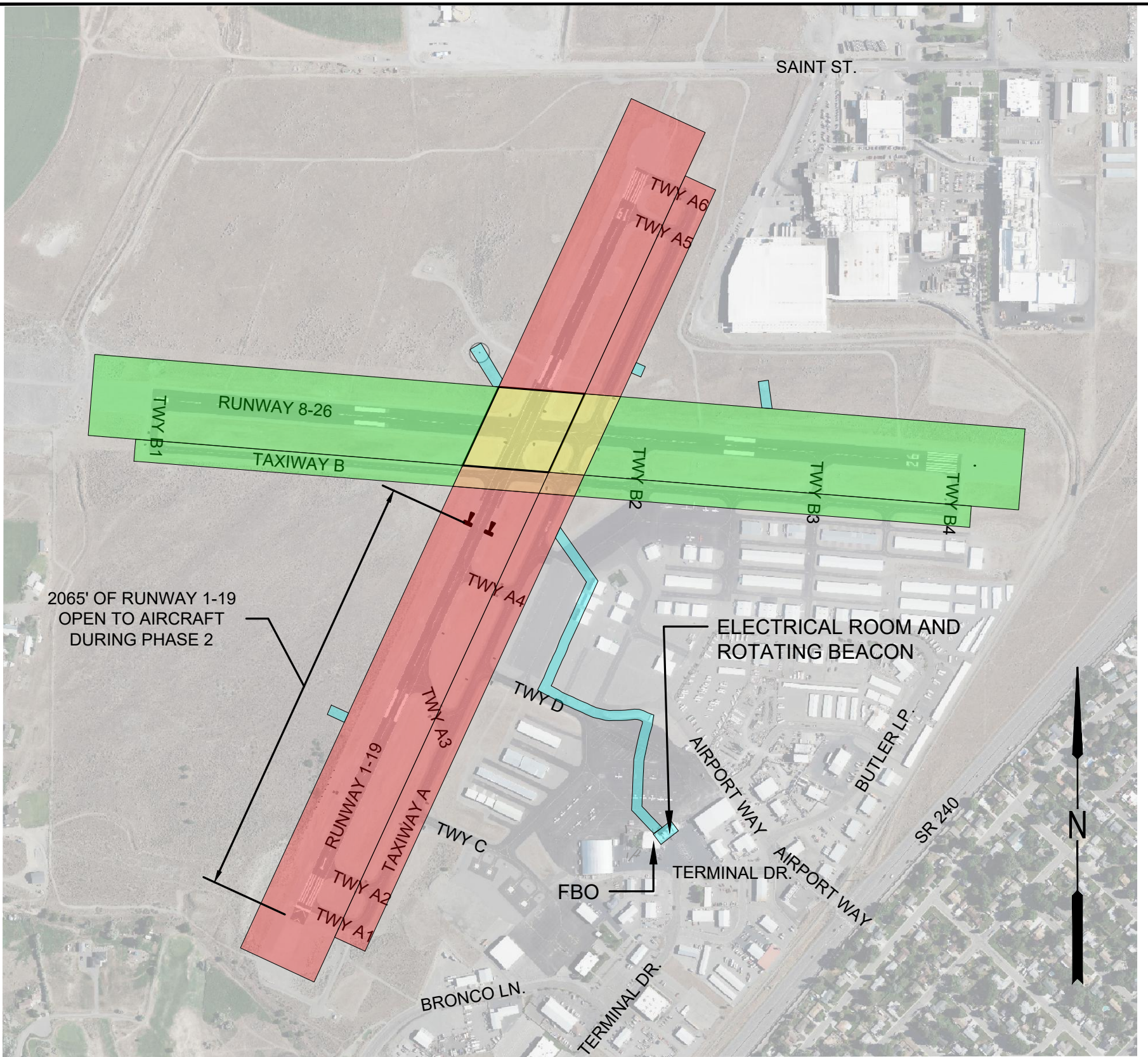
Navigation lights on 8-26 and Taxiway B will continue to be off until the end of September.

Runway 8-26 will be reopened for the weekend no later than 4 p.m., Friday, August 19th. The contractor may be crossing Runway 1-19 at Taxiway B, however, this should be very limited.

Portions of Taxiway B, east of Runway 1-19 will remain closed for the weekend to facilitate construction, however, full use of Runway 8-26 will still be available.

Pilots should continue to use caution when taxiing and during landings/takeoffs.

Also, please note that the FAA-controlled Medium Intensity Approach Lighting System (MALs) at the end of Runway 19 is temporarily out of service due to an underground wiring failure. In order to keep Runway 1-19 fully opened, the repair to the MALs will not happen until after September 6th during the intersection closure.



2065' OF RUNWAY 1-19
OPEN TO AIRCRAFT
DURING PHASE 2

ELECTRICAL ROOM AND
ROTATING BEACON

WORK AREA PHASING LEGEND

| PHASE | CRITICAL AREA(S) OF WORK | DURATION |
|-------------------|--|--------------|
| PHASE 1 | RW 8-26 CLOSED TAXIWAY B EAST OF RW 1-19 CLOSED TAXIWAY B WEST OF TAXIWAY A CLOSED | 35 WEEK DAYS |
| PHASE 2 | RW 8-26 CLOSED RW 1-19 REDUCED LENGTH TAXIWAY A NORTH OF RW 8-26 CLOSED TAXIWAY B WEST OF RW 1-19 CLOSED | 10 WEEK DAYS |
| PHASE 3A | RW 1-19 CLOSED TAXIWAY A NORTH OF RW 8-26 CLOSED TAXIWAY A SOUTH OF TAXIWAY B CLOSED TAXIWAY B WEST OF RW 1-19 CLOSED | 5 WEEK DAYS |
| PHASE 3B | RW 1-19 CLOSED TAXIWAY A NORTH OF RW 8-26 CLOSED TAXIWAY A SOUTH OF TAXIWAY B CLOSED | 35 WEEK DAYS |
| NO PHASE ASSIGNED | PAPI UNITS, WINDCONES, AND ELECTRICAL WORK ON APRON. NO IMPACTS TO RUNWAYS/TAXIWAYS EXPECTED. | CONCURRENT |

Y:\Projects\Benton, Port of Richland Electrical Replacement Project (Construction)\CAD\Exhibits\PHASING GRAPHIC FOR TENANTS.dwg



PORT OF BENTON
RICHLAND AIRPORT
ELECTRICAL REPLACEMENT PROJECT

CONSTRUCTION PHASING PLAN

