



RICHLAND AIRPORT – ELECTRICAL REPLACEMENT PROJECT

As Part of the Richland Airport Electrical Replacement Project, the Port will be issuing these weekly construction updates to keep airport users as well informed as possible in our attempt to limit the impact to the airport users.

Weekly Construction Update

Project Contact - Roger Wright, Project Manager

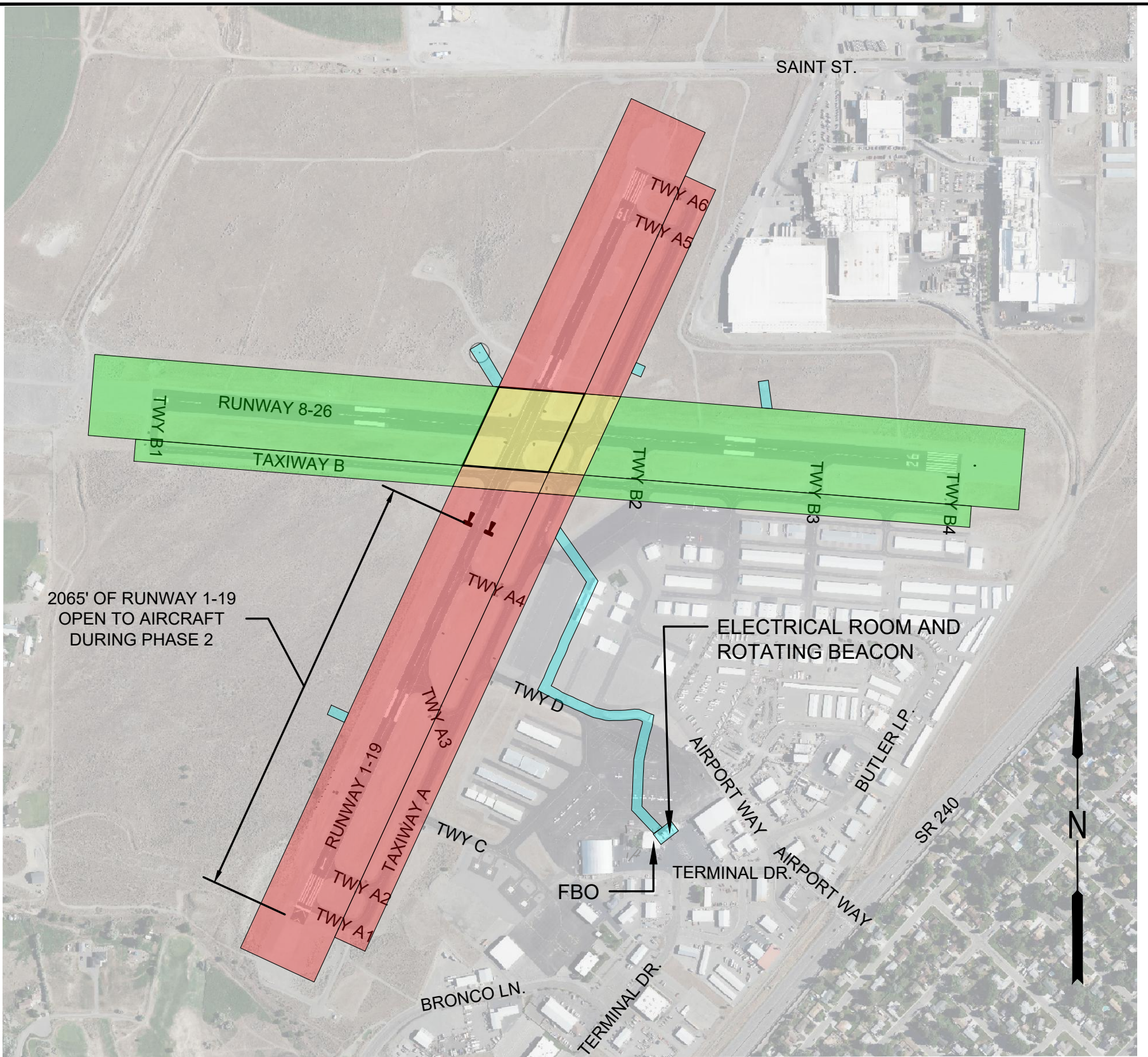
richlandairport@portofbenton.com, 509-375-3060

Construction Schedule for the week of August 29, 2022

The contractor will be finishing the work on Runway 8-26 this week, pulling wire and installing lights and signs in anticipation of the runway intersection closure. This will include work immediately adjacent to Taxiway A, but only on the taxiway. Runway 8-26 and Taxiway B will be closed Monday morning, August 29 beginning at 6 a.m. Runway 8-26 will be reopened for the Labor Day weekend, including all taxiway connectors, no later than 4 p.m. Friday, September 2.

Following the Labor Day weekend, beginning September 6 at 6 a.m., the runway intersection will be closed. Runway 8-26 will be completely closed. Runway 1-19 will be shortened to 2,065 ft. with a displaced threshold south of the runway intersection.

Portions of Taxiway B east of Runway 1-19 will remain closed this weekend to facilitate construction, however, full use of Runway 8-26 will still be available.



WORK AREA PHASING LEGEND

PHASE	CRITICAL AREA(S) OF WORK	DURATION
PHASE 1	RW 8-26 CLOSED TAXIWAY B EAST OF RW 1-19 CLOSED TAXIWAY B WEST OF TAXIWAY A CLOSED	35 WEEK DAYS
PHASE 2	RW 8-26 CLOSED RW 1-19 REDUCED LENGTH TAXIWAY A NORTH OF RW 8-26 CLOSED TAXIWAY B WEST OF RW 1-19 CLOSED	10 WEEK DAYS
PHASE 3A	RW 1-19 CLOSED TAXIWAY A NORTH OF RW 8-26 CLOSED TAXIWAY A SOUTH OF TAXIWAY B CLOSED TAXIWAY B WEST OF RW 1-19 CLOSED	5 WEEK DAYS
PHASE 3B	RW 1-19 CLOSED TAXIWAY A NORTH OF RW 8-26 CLOSED TAXIWAY A SOUTH OF TAXIWAY B CLOSED	35 WEEK DAYS
NO PHASE ASSIGNED	PAPI UNITS, WINDCONES, AND ELECTRICAL WORK ON APRON. NO IMPACTS TO RUNWAYS/TAXIWAYS EXPECTED.	CONCURRENT



PORT OF BENTON
RICHLAND AIRPORT
ELECTRICAL REPLACEMENT PROJECT

CONSTRUCTION PHASING PLAN

