



2022 - RICHLAND RAIL CONSTRUCTION PROJECTS

FOR IMMEDIATE RELEASE – August 1, 2022

Project Contact

Roger Wright, Project Manager

info@portofbenton.com, 509-375-3060

Construction to Begin on the Van Giesen/State Route 224 Railroad Crossing – Detour in Place Throughout Full Road Closure

RICHLAND, WASH – Port of Benton plans to begin construction on the Van Giesen/State Route 224 railroad crossing on Thursday, August 18, 2022 at Noon (12 p.m.) This project will fully replace the railroad crossing, rail, ties, concrete crossing panels and the road on both sides of the panels will be repaved.

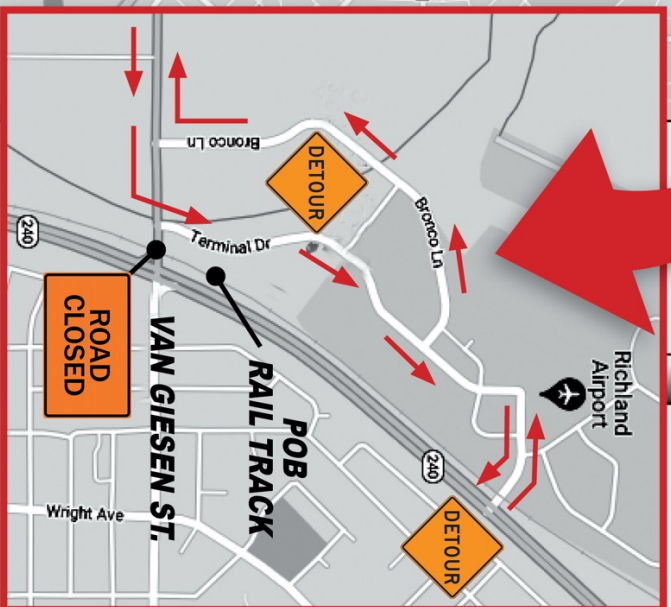
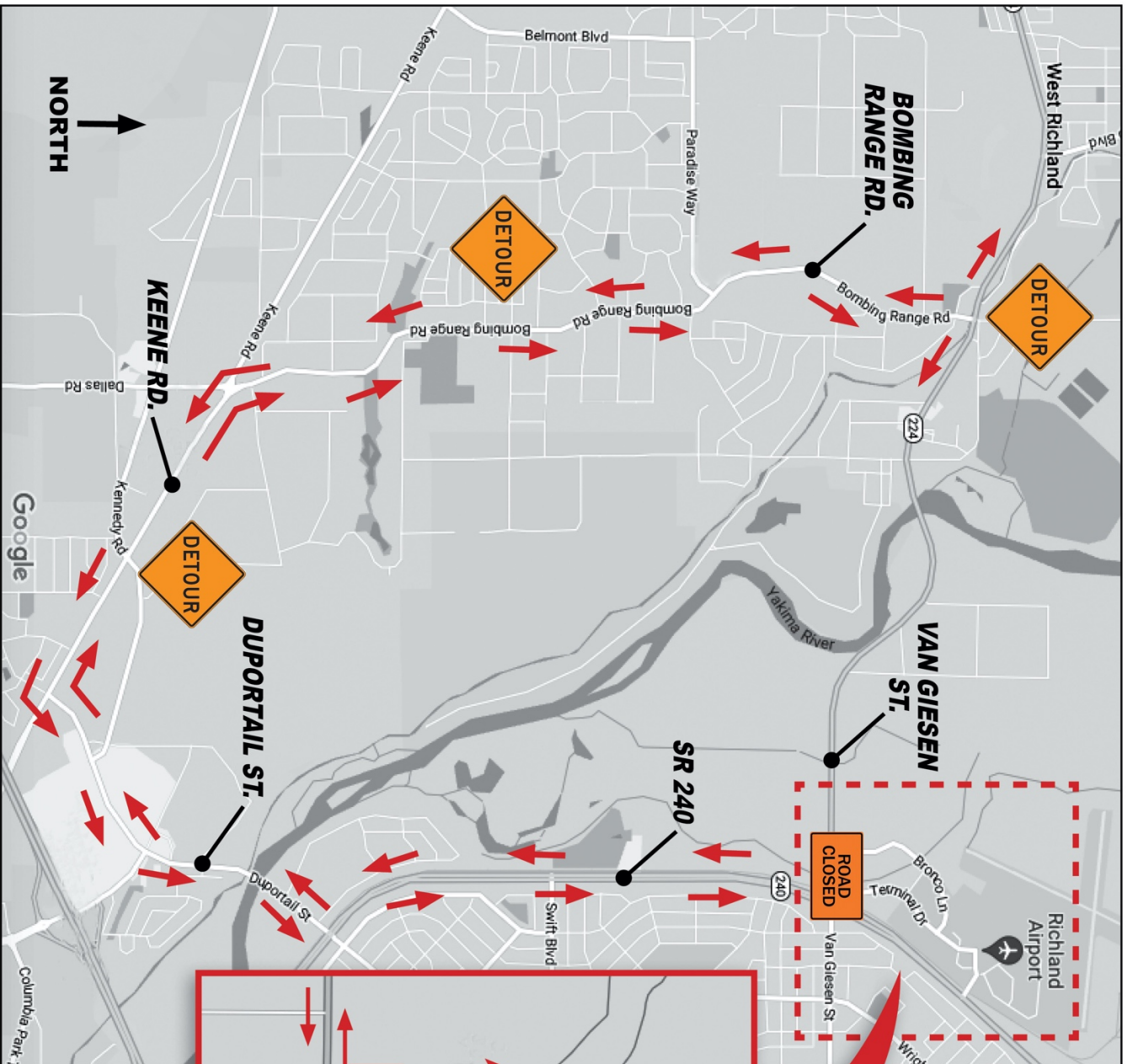
The railroad crossing replacement project will require **full closure** of Van Giesen Street for the duration of the project, with the crossing reopening for traffic on Monday, August 22, 2022 at 6 a.m. Detour signage will be in place and electronic highway notification will be displayed one week prior to the project start.

The Port has contracted with Railworks Track Systems for replacement of the Van Giesen/State Route 224 crossing project. Plans are in place to also replace the Swift Blvd./Cemetery crossing in September 2022. Both rail crossing projects are 100% port-funded.

For additional information, please visit portofbenton.com/projects, or call 509-375-3060.

**Please note that although the Port of Benton owns the rail and trackage commonly known as the Southern Connection, for all legal intents and purposes the Port of Benton is not considered a railroad, and as such, will not be taking over any operations of the Port trackage. We appreciate your patience and open communication throughout this process.*

###



**VAN GIESEN ST.
CLOSED AT
RAILROAD CROSSING
AUGUST 18 - 22**

LOCAL ACCESS ONLY