



## **RICHLAND AIRPORT – ELECTRICAL REPLACEMENT PROJECT**

As Part of the Richland Airport Electrical Replacement Project, the Port will be issuing these weekly construction updates to keep the Airport users as well informed as possible in our attempt to limit the impact to the airport users.

### **Weekly Construction Update**

Project Contact - Roger Wright, Project Manager

[richlandairport@portofbenton.com](mailto:richlandairport@portofbenton.com), 509-375-3060

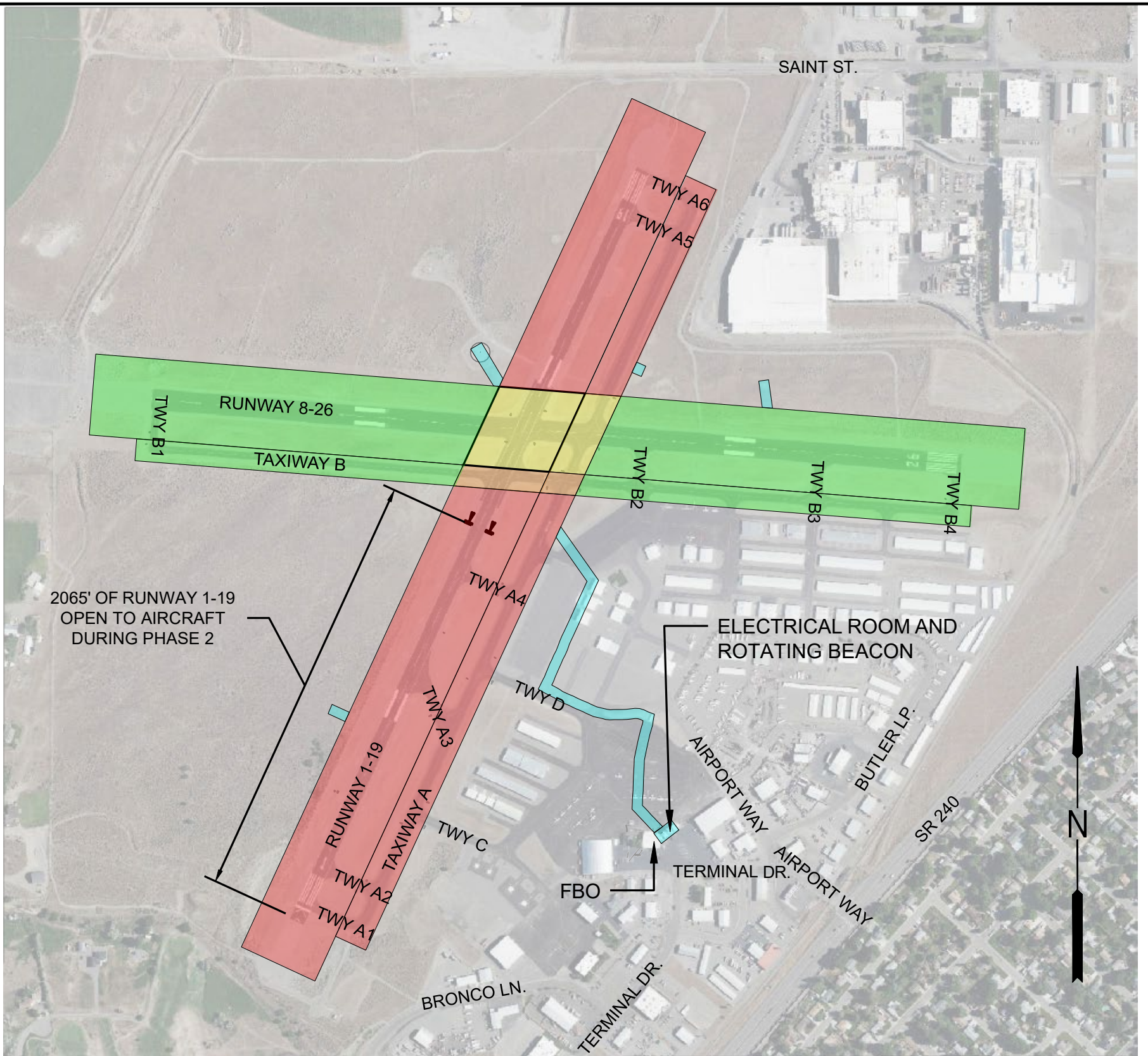
### **Construction Schedule for the Week of August 22, 2022**

The contractor is continuing to pull wire and install lighting on Runway 8-26 this week. Runway 8-26 and Taxiway B will be closed Monday morning August 22nd beginning at 6 a.m. and will be signed closed at both ends and at the runway intersection. Navigation lights on 8-26 and Taxiway B will continue to be off until the end of September. Runway 8-26 will be reopened for the weekend no later than 4 p.m., Friday August 26th.

**Portions of Taxiway B east of Runway 1-19 will remain closed for the weekend to facilitate construction**, however, full use of Runway 8-26 will still be available.

*Pilots should continue to use caution when taxiing and during landings/takeoffs.*

Also, please note that the FAA-controlled Medium Intensity Approach Lighting System (MALs) at the end of Runway 19 is temporarily out of service due to an underground wiring failure. In order to keep Runway 1-19 fully opened, the repair to the MALs will not happen until after September 6<sup>th</sup> during the intersection closure.



### WORK AREA PHASING LEGEND

PHASE	CRITICAL AREA(S) OF WORK	DURATION
PHASE 1	RW 8-26 CLOSED TAXIWAY B EAST OF RW 1-19 CLOSED TAXIWAY B WEST OF TAXIWAY A CLOSED	35 WEEK DAYS
PHASE 2	RW 8-26 CLOSED RW 1-19 REDUCED LENGTH TAXIWAY A NORTH OF RW 8-26 CLOSED TAXIWAY B WEST OF RW 1-19 CLOSED	10 WEEK DAYS
PHASE 3A	RW 1-19 CLOSED TAXIWAY A NORTH OF RW 8-26 CLOSED TAXIWAY A SOUTH OF TAXIWAY B CLOSED TAXIWAY B WEST OF RW 1-19 CLOSED	5 WEEK DAYS
PHASE 3B	RW 1-19 CLOSED TAXIWAY A NORTH OF RW 8-26 CLOSED TAXIWAY A SOUTH OF TAXIWAY B CLOSED	35 WEEK DAYS
NO PHASE ASSIGNED	PAPI UNITS, WINDCONES, AND ELECTRICAL WORK ON APRON. NO IMPACTS TO RUNWAYS/TAXIWAYS EXPECTED.	CONCURRENT



PORT OF BENTON  
RICHLAND AIRPORT  
ELECTRICAL REPLACEMENT PROJECT

CONSTRUCTION PHASING PLAN

