



RICHLAND AIRPORT – ELECTRICAL REPLACEMENT PROJECT

Weekly Construction Update –

Project Contact -Roger Wright, Project Manager

richlandairport@portofbenton.com, 509-375-3060

As Part of the Richland Airport Electrical Replacement Project, the Port will be issuing these weekly construction updates to keep the Airport Users as well informed as possible in our attempt to limit the impact to the airport users.

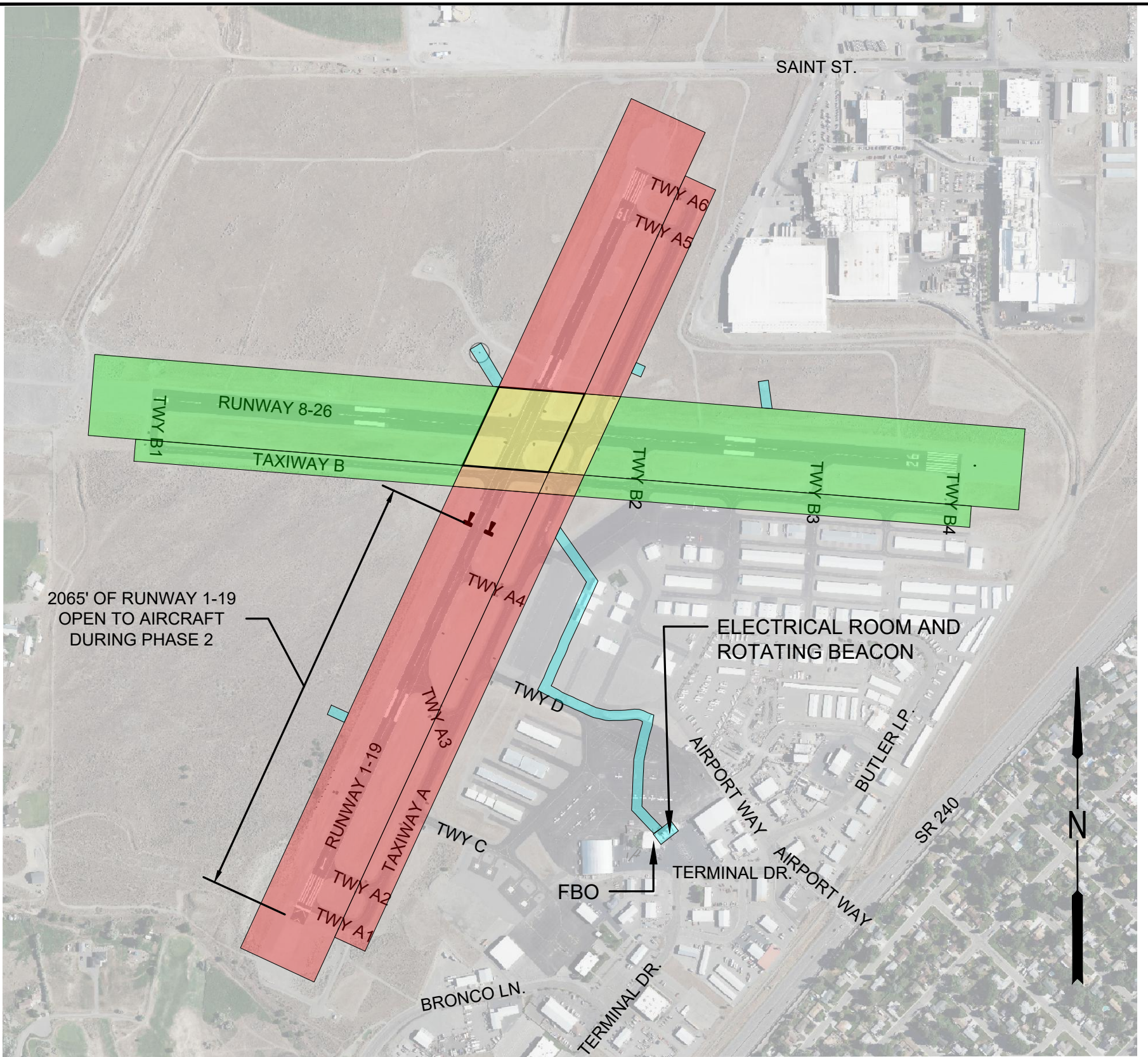
Construction Schedule for the week of July 18th

Runway 08-26 and Taxiway B will be closed Monday morning July 18th beginning at 7:30 am, and will be signed closed at both ends and navigation lights will be turned off. The runway will be reopened for the weekend beginning at 4pm Friday July 22nd. At times during the day the navigational lights on Runway 01-19 may be affected, but should be operational during evening hours. Contractor may be crossing Runway 01-19 at taxiway B, however, this should be very limited. Generally the contractor will be accessing runway 08 from the access road to the north.

In addition, on Monday July 18th and Tuesday July 19th, the Port will be repairing asphalt cracks on Taxiway A. This will be limited to small areas on Taxiway A and we ask pilots to please taxi around the moving work areas. We will be monitoring airport radio traffic and coordinating the work areas with pilots.

We are not anticipating any trench cuts across the runway unless we find failed conduit runs, and then the intent is to directionally bore under the runway.

We do not anticipate contractor equipment parking on the closed runway, however, contractor equipment will be working close to the edge of the paved surfaces, including close to the runway intersection. Pilots should use caution when taxiing and during landings/takeoffs.



WORK AREA PHASING LEGEND

PHASE	CRITICAL AREA(S) OF WORK	DURATION
PHASE 1	RW 8-26 CLOSED TAXIWAY B EAST OF RW 1-19 CLOSED TAXIWAY B WEST OF TAXIWAY A CLOSED	35 WEEK DAYS
PHASE 2	RW 8-26 CLOSED RW 1-19 REDUCED LENGTH TAXIWAY A NORTH OF RW 8-26 CLOSED TAXIWAY B WEST OF RW 1-19 CLOSED	10 WEEK DAYS
PHASE 3A	RW 1-19 CLOSED TAXIWAY A NORTH OF RW 8-26 CLOSED TAXIWAY A SOUTH OF TAXIWAY B CLOSED TAXIWAY B WEST OF RW 1-19 CLOSED	5 WEEK DAYS
PHASE 3B	RW 1-19 CLOSED TAXIWAY A NORTH OF RW 8-26 CLOSED TAXIWAY A SOUTH OF TAXIWAY B CLOSED	35 WEEK DAYS
NO PHASE ASSIGNED	PAPI UNITS, WINDCONES, AND ELECTRICAL WORK ON APRON. NO IMPACTS TO RUNWAYS/TAXIWAYS EXPECTED.	CONCURRENT



PORT OF BENTON
RICHLAND AIRPORT
ELECTRICAL REPLACEMENT PROJECT

CONSTRUCTION PHASING PLAN



Y:\Projects\Benton, Port of Richland Electrical Replacement Project (Construction)\CAD\Exhibits\PHASING GRAPHIC FOR TENANTS.dwg