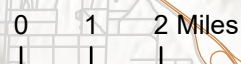
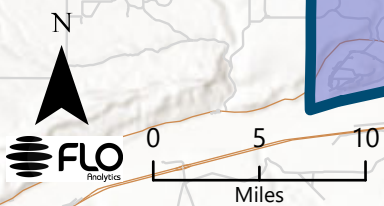


PORT OF BENTON  
DRAFT MAP 1

- Existing Districts
- Municipalities
- Draft Map 1 Districts
  - 1
  - 2
  - 3

Hanford Area  
(No Residents)



# Port of Benton Redistricting Summary Statistics

## Draft Map 1 – Commission Voting Districts Summary Statistics

11/05/2021



### Ideal Population Criterion

Ideal Population	18,575	
Overall Range	4.8%	
< 5.0%	5.0 - 10.0%	> 10.0%

2020 Census P.L. 94-171 Redistricting  
Data Summary Files - Total Population.

### Total Population & Deviation per District

District ID	Total Population	Over / Under Ideal	Deviation From Ideal
1	18,073	-502	-2.7%
2	18,685	110	0.6%
3	18,968	393	2.1%

### Total Population by Race/Ethnicity per District

District ID	White	Black or African American	American Indian or Alaska Native	Asian	Native Hawaiian and Pacific Islander	Some Other Race	Two or More Races	Hispanic/Latino
1	72.8%	1.3%	0.7%	2.0%	0.3%	0.7%	6.3%	15.8%
2	72.0%	1.6%	0.4%	5.7%	0.2%	0.6%	5.2%	14.3%
3	50.2%	0.4%	0.6%	0.9%	0.1%	0.4%	3.3%	44.0%

2020 Census P.L. 94-171 Redistricting Data Summary Files - Total Population by Race and Hispanic/Latino Origin.

### CVAP by Race/Ethnicity per District

District ID	White	Black or African American	American Indian or Alaska Native	Asian	Native Hawaiian and Pacific Islander	Two or More Races	Hispanic/Latino
1	80.0%	2.2%	0.9%	1.4%	0.0%	2.7%	12.8%
2	82.5%	1.7%	0.6%	3.5%	0.0%	3.6%	8.0%
3	71.1%	0.4%	2.0%	0.1%	0.1%	0.9%	25.4%

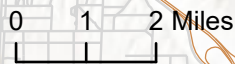
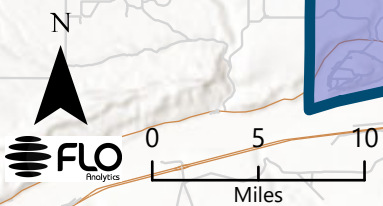
2015-2019 American Community Survey Citizen Voting-age Population (CVAP) by Race and Ethnicity Special Tabulation. Rounding of estimates may lead to summation of race/ethnicity percentages not equal to 100% (+/- 1%)



PORT OF BENTON  
DRAFT MAP 2

- Existing Districts
- Municipalities
- Draft Map 2 Districts
  - 1
  - 2
  - 3

Hanford Area  
(No Residents)



# Port of Benton Redistricting Summary Statistics

## Draft Map 2 – Commission Voting Districts Summary Statistics

11/05/2021



### Ideal Population Criterion

Ideal Population		18,575
Overall Range		0.4%
< 5.0%	5.0 - 10.0%	> 10.0%

2020 Census P.L. 94-171 Redistricting  
Data Summary Files - Total Population.

### Total Population & Deviation per District

District ID	Total Population	Over / Under Ideal	Deviation From Ideal
1	18,604	29	0.2%
2	18,527	-48	-0.3%
3	18,595	20	0.1%

### Total Population by Race/Ethnicity per District

District ID	White	Black or African American	American Indian or Alaska Native	Asian	Native Hawaiian and Pacific Islander	Some Other Race	Two or More Races	Hispanic/Latino
1	72.8%	1.4%	0.7%	2.0%	0.3%	0.7%	6.5%	15.7%
2	68.8%	1.6%	0.4%	5.7%	0.2%	0.6%	5.1%	17.7%
3	53.0%	0.4%	0.6%	1.0%	0.1%	0.4%	3.2%	41.3%

2020 Census P.L. 94-171 Redistricting Data Summary Files - Total Population by Race and Hispanic/Latino Origin.

### CVAP by Race/Ethnicity per District

District ID	White	Black or African American	American Indian or Alaska Native	Asian	Native Hawaiian and Pacific Islander	Two or More Races	Hispanic/Latino
1	80.3%	2.2%	0.9%	1.4%	0.0%	2.7%	12.5%
2	82.1%	1.7%	0.5%	3.6%	0.0%	3.7%	8.4%
3	71.5%	0.4%	2.1%	0.1%	0.1%	0.9%	24.8%

2015-2019 American Community Survey Citizen Voting-age Population (CVAP) by Race and Ethnicity Special Tabulation. Rounding of estimates may lead to summation of race/ethnicity percentages not equal to 100% (+/- 1%)