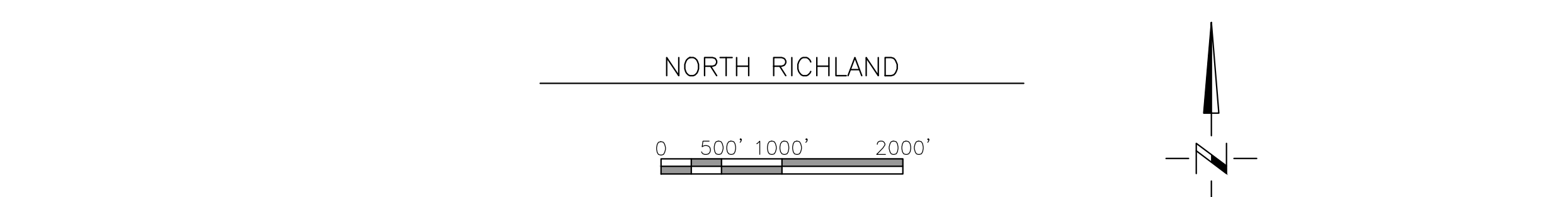
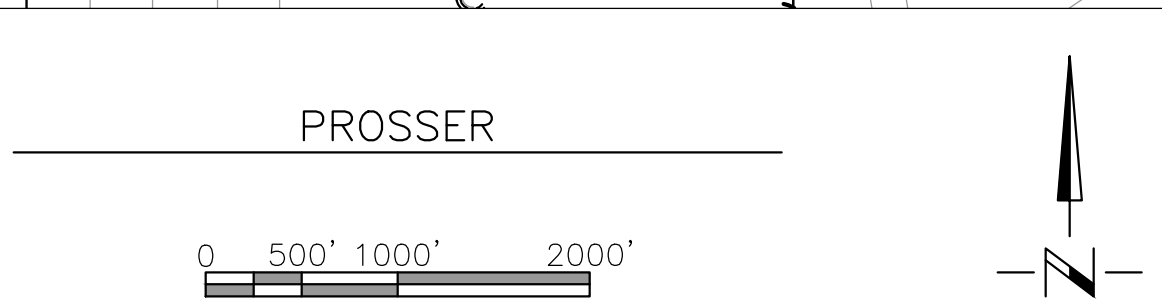
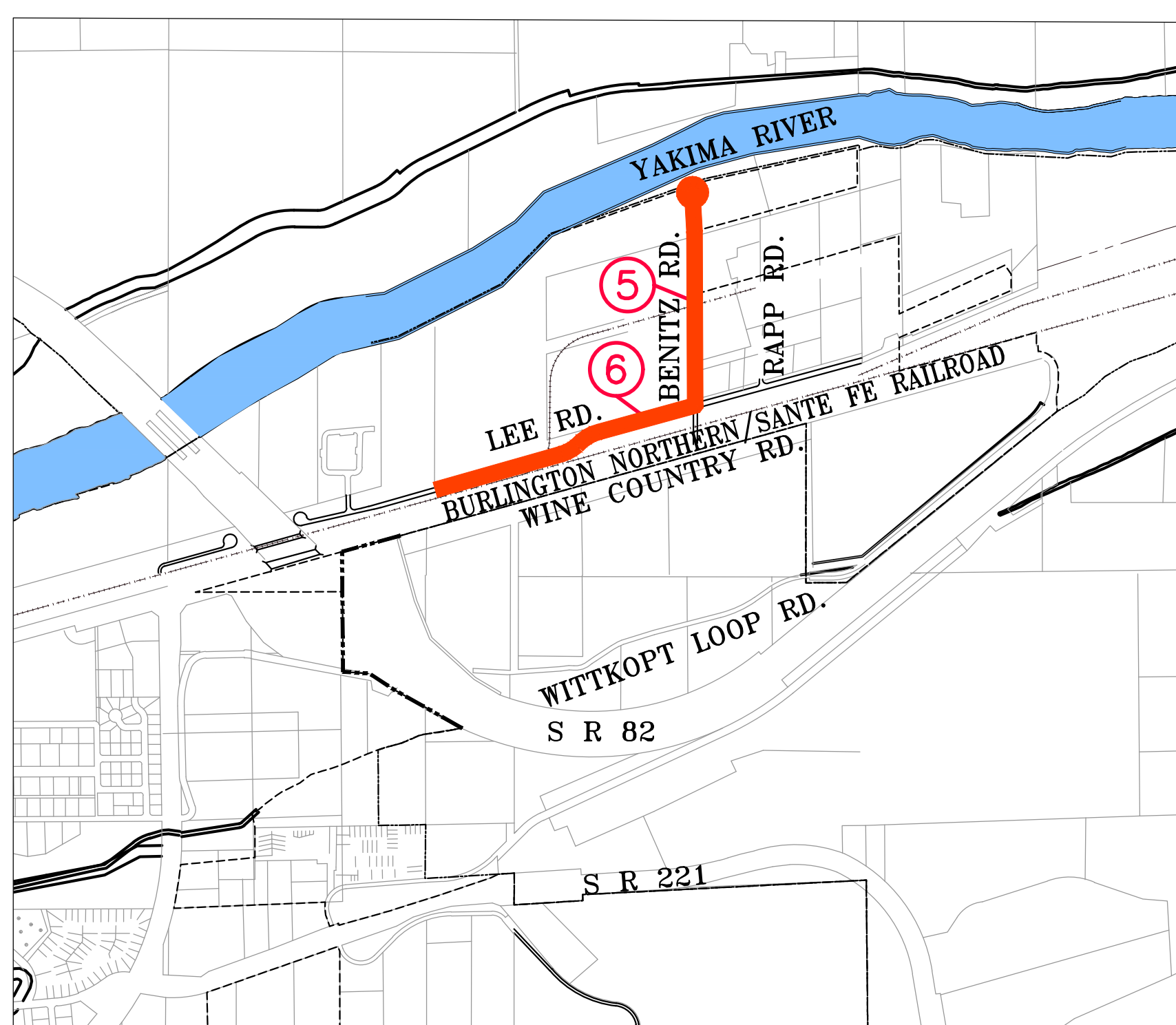
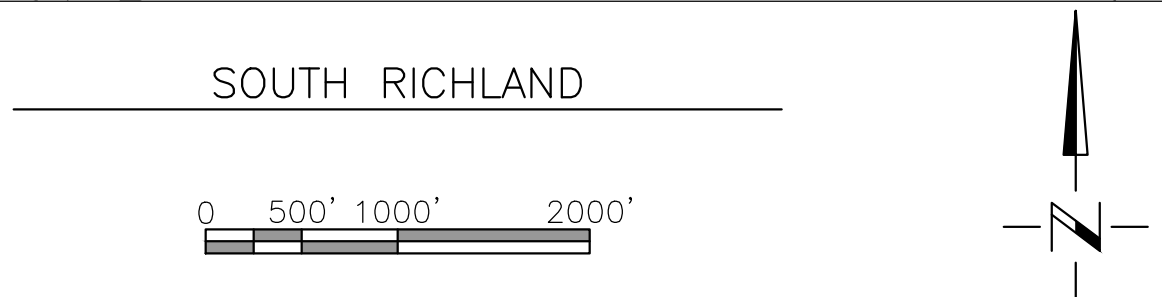
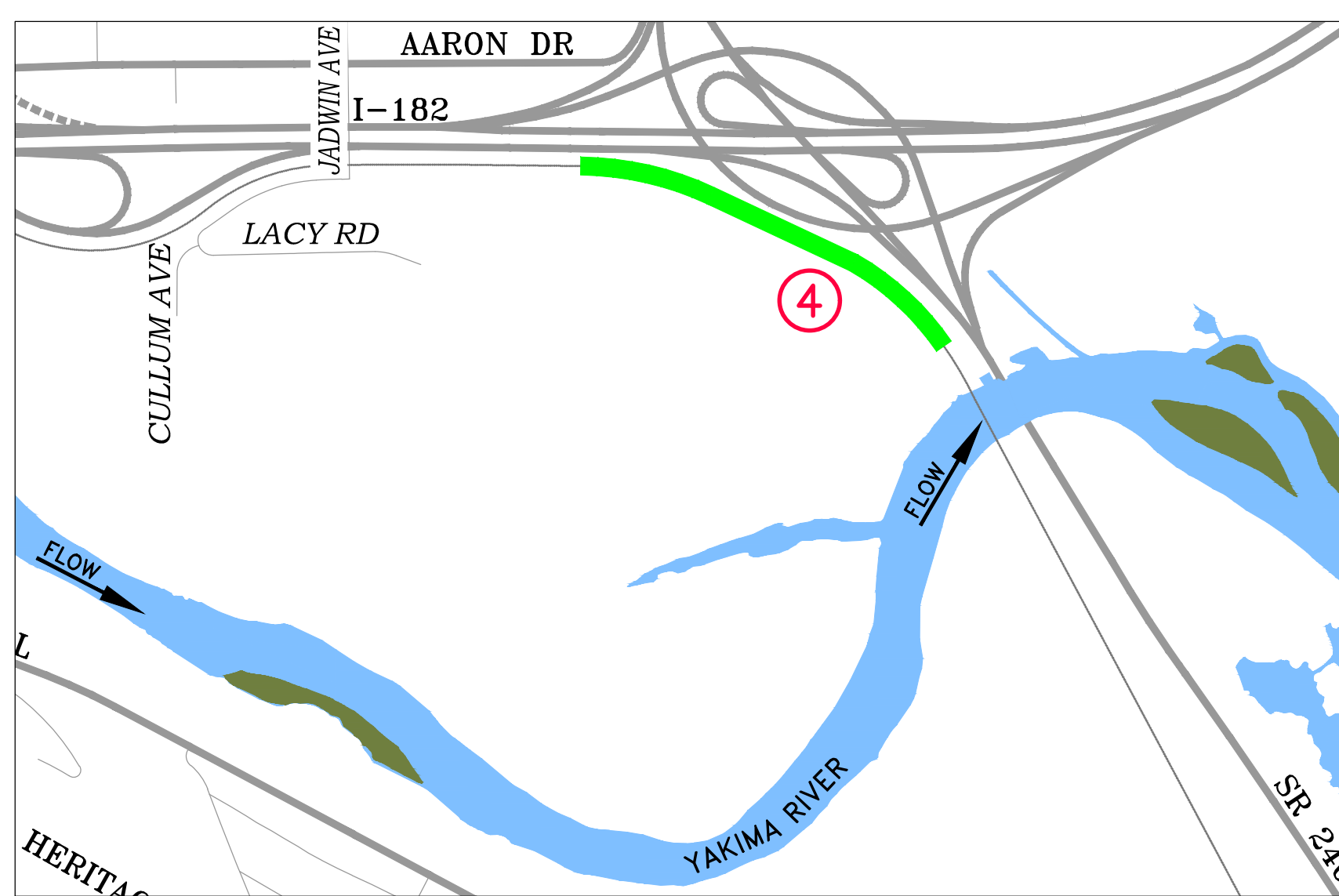
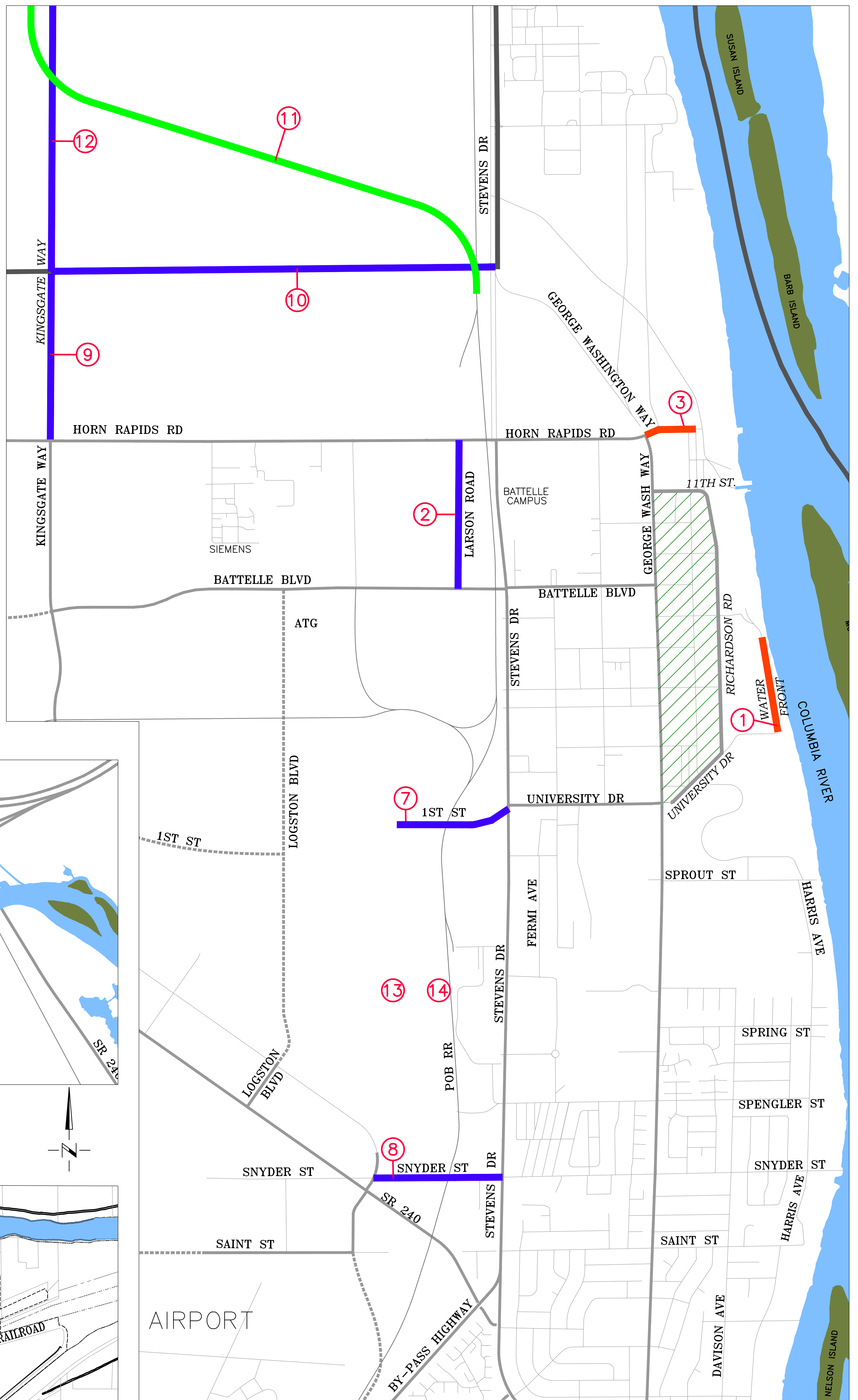


# PORT OF BENTON

## SIX YEAR TRANSPORTATION IMPROVEMENT PROGRAM 2022 - 2027

### PROJECT LISTING

- ① IMPROVEMENTS TO WATERFRONT DRIVE, NORTH OF UNIVERSITY DRIVE.
- ② LARSON ROAD - BATTELLE BOULEVARD TO HORN RAPIDS ROAD.
- ③ HORN RAPIDS ROAD EXTENSION (FROM EAST END OF HORN RAPIDS TO BARGE FACILITY) AND IMPROVEMENTS TO BARGE FACILITY.
- ④ SOUTH RICHLAND RAIL TRANSLOAD FACILITY - (ADJACENT TO SR 240 - INLAND ASPHALT).
- ⑤ BENITZ ROAD - RECONSTRUCTION FROM WINE COUNTRY ROAD TO NORTH END.
- ⑥ LEE ROAD - RECONSTRUCTION FROM BENITZ ROAD WEST TO POB BOUNDARY.
- ⑦ 1ST STREET WEST - STEVENS DRIVE WEST 1,500 FEET TO RAILROAD TRACKS.
- ⑧ SNYDER STREET - STEVENS DRIVE TO ROBERTSON ROAD, INCLUDING RAIL CROSSING
- ⑨ EXTEND KINGSGATE WAY INTO THE 1,341 ACRE INDUSTRIAL PARK
- ⑩ EXTENDS AN EAST-WEST ROAD INTO THE 1,341 ACRE INDUSTRIAL PARK
- ⑪ EXTEND RAILROAD INTO THE 1,341 ACRE INDUSTRIAL PARK
- ⑫ PHASE II EXTENSION OF KINGSGATE WAY INTO THE 1,341 ACRE INDUSTRIAL PARK
- ⑬ RAIL CROSSING MAINTENANCE IMPROVEMENTS - REPLACE CROSSINGS AT CENTER PARKWAY, STEPTOE STREET, CEMETARY ROAD/SWIFT BOULEVARD, VAN GIESEN STREET, AIRPORT WAY, SAINT STREET, SR 240, BATTELLE BOULEVARD, AND HORN RAPIDS ROAD
- ⑭ TRACK IMPROVEMENTS ACROSS THE PORT SYSTEM



### LEGEND

- NEW CONSTRUCTION
- RECONSTRUCTION PROJECT
- MISCELLANEOUS CONSTRUCTION
- TECHNOLOGY AND BUSINESS CAMPUS

ARCHIBALD & CO  
ARCHITECTS, P.S.  
660 Symons Street  
Richland WA 99354  
p: 509 . 946 . 4189  
f: 509 . 943 . 1796  
www.archibald.design