



PORT OF BENTON Press Release

June 29, 2021

Media Contact
Wally Williams, Director of Marketing
williams@portofbenton.com, 509-375-3060

Project Contact
Ron Branine, Facilities Director
ron@portofbenton.com, 509-375-3060

2021 Pavement Maintenance Program, July Road Closures

Richland, Wash. – The Port of Benton has selected Central Paving to perform initial 2021 pavement maintenance on Port owned and maintained streets. The Port Commission awarded the \$72,924.36 contract to Central Paving at their June 16, 2021 meeting.

Initial patch and repair work will begin on July 1st and 2nd, with crack seal and coating to occur on July 7th through the 9th. Businesses, residents, pedestrians and cyclists should be prepared to use alternate routes. Residents and visitors to Willow Pointe will be required to use 9th Street for access during the full closure of Battelle Boulevard. Pedestrians and cyclists are not permitted on the riverfront trail at any time during the closures for their own safety and that of the road crews. Additional closures will occur in August and announced via Press Release.

July 1st and 2nd

- Port of Benton Blvd (between Hills St and 6th St, all day, both days)
- Richland Riverfront Multi-Use Trail between University Dr and USS Triton Sail Park (full closure, all day, both days)
- North SkyPark Parking Lot (full closure, all day, both days)
- Larson Road (partial closure, July 2nd only)
- Butler Loop (partial closure)

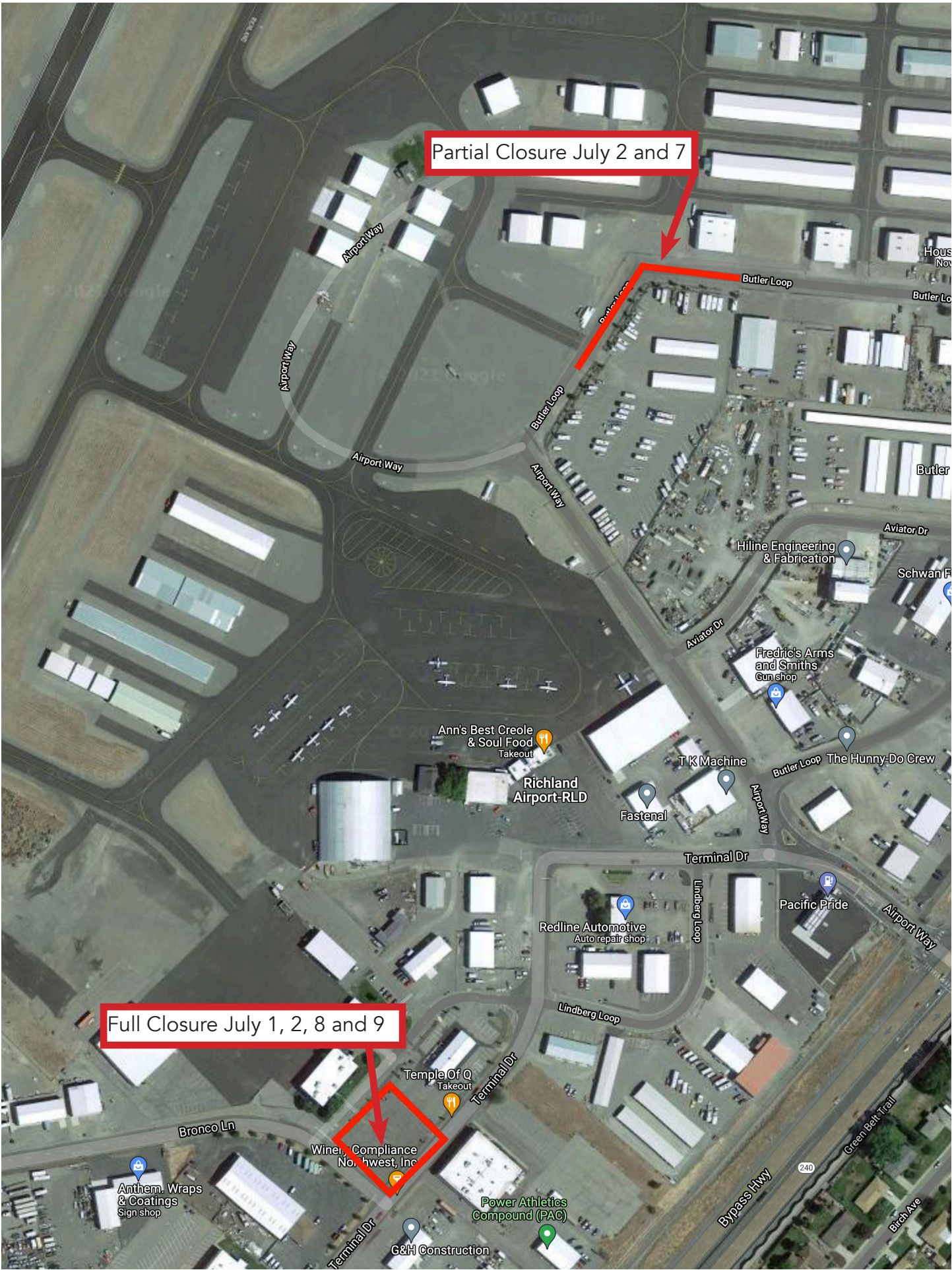
July 7th, 8th, and 9th

- July 7th
 - Battelle Blvd (between George Washington Way and the Columbia River, 7am to 2pm)
 - Port of Benton Blvd (between Hills St and 6th St, noon to 5pm)
 - Riverfront Trail (full closure, all day)
 - Butler Loop (partial closure)
- July 8th
 - North Skypark Parking Lot (full closure, all day)
 - Riverfront Trail (full closure, all day)
- July 9th
 - Riverfront Trail (full closure, all day)
 - North Skypark Parking Lot (full closure, all day)
 - Larson Road (partial closure, all day)

Please see attached maps for more information.

#





Partial Closure July 2 and 7

Full Closure July 1, 2, 8 and 9



Partial Closure
July 2 and 9
All Day

No vehicles should be left
in parking lot adjacent to
Larson Road.

